

# TRANSPARENT DATA ENCRYPTION

## OVERVIEW

Your business is built on data. Whether it is customer credit information, employee personnel files, or prized intellectual property, any security breach can result in serious implications to your business. Thus, security is paramount for anyone building or supporting business applications today. According to Gartner, security is one of the top IT concerns, due to the consistent increases in the complexity and volume of targeted attacks coupled with the necessity of companies to address regulatory or compliance-related issues<sup>1</sup>.

Many of these standards and regulations are driving corporations to require their software vendors to support data privacy not only “in transit” but also “while at rest.” However, many companies have either incomplete security solutions that cannot provide this ultimate protection or custom-built solutions that are resource intensive and cumbersome to not only build, but to maintain. Progress Software has a solution that can fulfill the “while at rest” component of an end-to-end application data privacy system.

## WHAT IT DOES

Progress® OpenEdge® Transparent Data Encryption [TDE] uses standard encryption libraries and encryption key management to provide transparent encryption of information in the database. OpenEdge TDE provides protection on disk, in backups, and binary dump files<sup>2</sup> without having to change the application itself. You simply set it and forget it, knowing that your data is securely protected.

## BENEFITS

### ULTIMATE PROTECTION OF DATA “WHILE AT REST”

Progress OpenEdge TDE enables you to encrypt everything [or a subset like a single table] in your database protecting your sensitive information from unauthorized access while on-disk, backup, and binary dumps. It includes both policy tools and

### HIGHLIGHTS

- ▶ Encrypt all or part of the database **without changing** the application
- ▶ **Physically** – not virtually – separate your data in database
- ▶ Helps meet compliance for government and/or corporate standards like **PCI-DSS, SOX, HIPAA, and EU-DPD**.
- ▶ **Minimal** system performance **impact** [less than 2%] while encrypting/decrypting

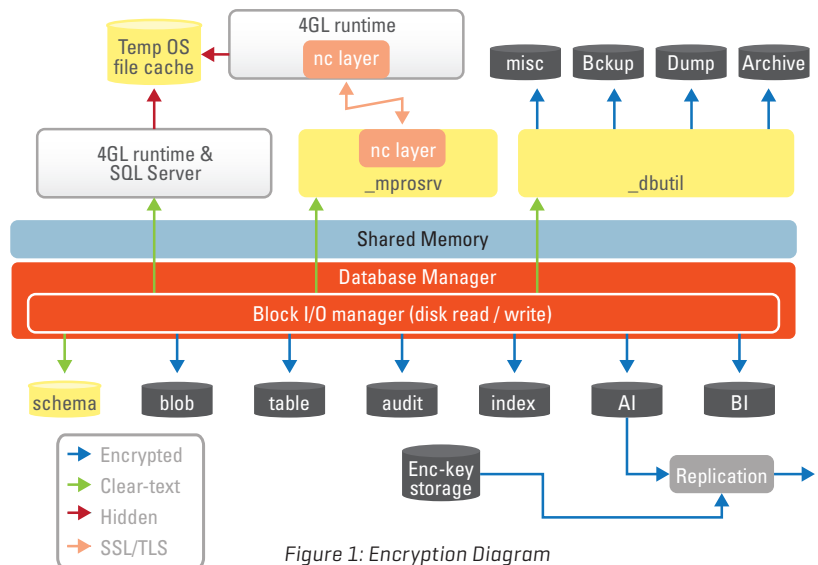


Figure 1: Encryption Diagram

<sup>1</sup> Global Security Market to Reach \$67.2B in 2013: Gartner

<sup>2</sup> Sometimes it is necessary to create binary dump files for routine database maintenance. For this reason, binary dumps for maintenance work are unencrypted by default.

a secure encryption key store kept separate from the database to manage access to the encrypted database. This solution leverages the authentication, authorization, and auditing functionality inherent in Progress OpenEdge and additional Advanced Business Language (ABL) security features to provide seamless protection of your data.

## NO CHANGES NEEDED TO APPLICATION

Progress OpenEdge TDE is a complete “in the box” solution that requires no changes to your application, user procedures, or Data Base Administrator (DBA) management processes. Your data is read into memory and stored unencrypted. This means the application is able to execute at full speed with minimal performance degradation (less than 2%) while encrypting/decrypting.

## CONFIGURABLE TO YOUR NEEDS

Progress OpenEdge TDE allows you to balance the database encryption and administration workload against individual security requirements. Your DBA can configure encryption for only those database objects requiring it, thus providing protection at the lowest possible cost. Progress OpenEdge TDE supports several encryption ciphers (AES, DES, DES-3, and RC4) allowing you to weigh the cost-benefit of your security needs.

## COMPLIANCE WITH VARIOUS GOVERNMENT OR CORPORATE REGULATIONS

Progress OpenEdge TDE helps you comply with numerous government regulations including Payment Card Industry-Data Security Standard (PCI-DSS), Sarbanes-Oxley (SOX), Health Insurance Portability and Accountability Act (HIPAA), and the European Union Directive on Data Protection (EU-DPD). While these regulations are critical to retail, financial services, and healthcare verticals, all companies can benefit from the assurance of protected data.

## ABOUT PROGRESS OPENEDGE

Progress® OpenEdge® is the leading platform for simplifying and streamlining the development, integration and management of global business applications for fast time-to-market. With the Progress® OpenEdge® product, you can develop dynamic solutions that incorporate business process and integration capabilities securely across multiple platforms and devices. Whether you deploy on-premise, on a mobile device, or in the Cloud, the Progress OpenEdge application offers a single integrated platform that is 40% more productive and provides a 30% cost savings versus the competition. Over 47,000 businesses in more than 175 countries run on the Progress OpenEdge platform. For more information, please visit [www.progress.com/openedge](http://www.progress.com/openedge).

### PROGRESS SOFTWARE

Progress Software Corporation [NASDAQ: PRGS] is a global software company that simplifies the development, deployment and management of business applications on-premise or in the cloud, on any platform or device, to any data source, with enhanced performance, minimal IT complexity and low total cost of ownership.

### WORLDWIDE HEADQUARTERS

Progress Software Corporation, 14 Oak Park, Bedford, MA 01730 USA Tel: +1 781 280-4000 Fax: +1 781 280-4095 On the Web at: [www.progress.com](http://www.progress.com)

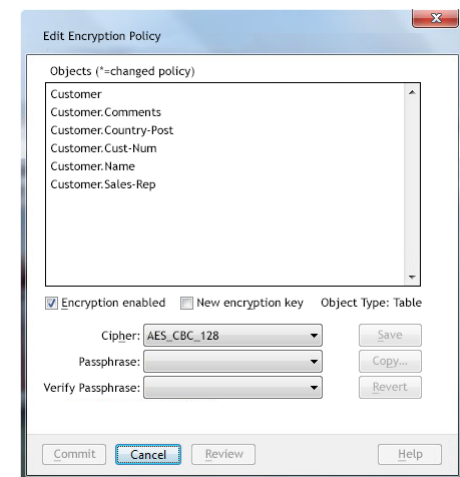
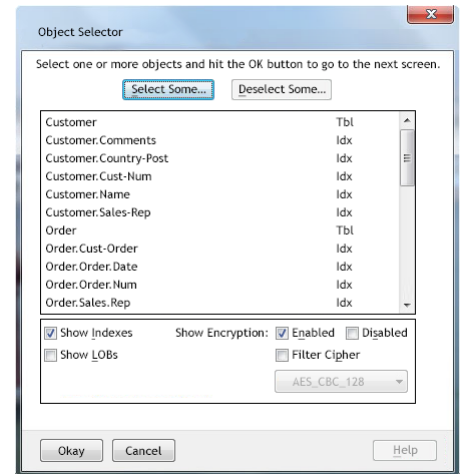
Find us on [facebook.com/progresssw](https://www.facebook.com/progresssw) [twitter.com/progresssw](https://twitter.com/progresssw) [youtube.com/progresssw](https://www.youtube.com/progresssw)

For regional international office locations and contact information, please go to [www.progress.com/worldwide](http://www.progress.com/worldwide)

Progress and OpenEdge are trademarks or registered trademarks of Progress Software Corporation or one of its affiliates or subsidiaries in the U.S. and other countries. Any other marks contained herein may be trademarks of their respective owners. Specifications subject to change without notice. © 2013 Progress Software Corporation and/or its subsidiaries or affiliates. All rights reserved.

Rev. 10/13 | 131016-0093

[www.progress.com](http://www.progress.com)



Figures 2 and 3: Easy-to-use interface for selection of security variables.

## SYSTEM REQUIREMENTS

- ▶ Progress OpenEdge **10.2B or higher**

