

5 Benefits of Upgrading to Progress OpenEdge 12.8 Today

DATA SHEET



Staying ahead means embracing technology that not only keeps your business running but also helps it thrive. Designed to support your enterprise through every challenge and opportunity, the Progress® OpenEdge® platform empowers your organization with the tools and capabilities to adapt to new technologies. Upgrading to OpenEdge 12.8 isn't just about maintaining what works; it's about amplifying potential and maximizing the value of your OpenEdge investment for years to come.

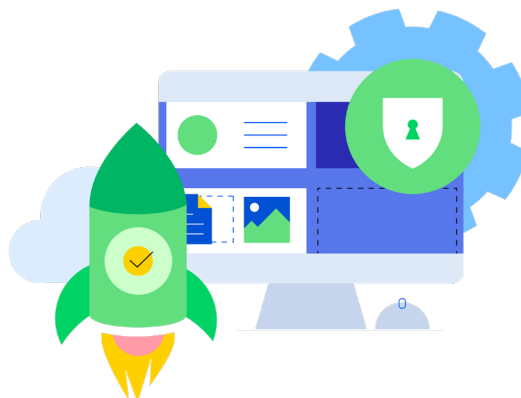
Why Now?

OpenEdge 11.7 was officially retired on April 1, 2025.

Your OpenEdge platform is a trusted foundation for your business growth. With OpenEdge 12.8, you can extend that trust further by embracing enhanced security, efficiency and innovation to drive your business forward.

With the latest Long-Term Support (LTS) release, OpenEdge 12.8 offers a robust foundation for building high-performing and future-ready enterprise applications while continuously prioritizing security. It enables your organization to handle evolving digital requirements while supporting your business.

The five key benefits highlight how upgrading from version 11.7 or older delivers tangible business value—empowering your teams and positioning your business for success.



Top 5 Benefits of Upgrading to OpenEdge 12.8

01

Improved Performance, Scalability and Availability

Upgrading to OpenEdge 12.8 delivers meaningful performance and scalability gains for your enterprise applications. Multi-threaded OpenEdge Database Server and utilities, including index checks, enable faster operational performance, while online database maintenance operations reduce the need for downtime during routine management tasks. The OpenEdge Command Center (OECC) provides centralized monitoring, administration and diagnostics, giving your teams real-time insights and proactive management of application health. These enhancements help your applications handle increased workloads and adapt to evolving business needs, resulting in a smoother user experience and greater operational efficiency.

02

Enhanced Security and Regulatory Compliance

OpenEdge 12.8 introduces robust security features, such as Dynamic Data Masking (DDM), JSON Web Encryption (JWE) and support for Hardware Security Modules (HSM). Dynamic Data Masking helps you comply with regulations like GDPR and HIPAA by masking sensitive data at runtime based on user roles. TLS 1.3 support enables the latest encryption protocols, reducing the risk of cyberattacks and data breaches with near-tamper-resistant Archive Procedure Library (APL) code signing support—critical in today's threat landscape. Additional enhancements like APL signing and protected compile further strengthen code integrity and application trust. These and other capabilities—some included in the OpenEdge Advanced Security package—reflect Progress' ongoing investment in layered, enterprise-grade security.

03

Developer Productivity and Operational Efficiency

OpenEdge 12.8 empowers your development teams with real-time application observability via OpenTelemetry integration. The VAR statement, shorthand operators and advanced data aggregation functions enable developers to write more concise, efficient code. The integration of a built-in GenAI interface in Progress Developer Studio for OpenEdge (PDSOE) 12.8.4 further streamlines development by allowing developers to submit questions and prompts directly to their preferred GenAI engine within the Integrated Development Environment (IDE). Enhanced DevOps support and cloud-ready tooling simplify deployment and maintenance, reducing IT overhead and accelerating time to market for new features.

04

Modern Integration and Interoperability

OpenEdge 12.8 makes it easier to integrate with modern platforms, APIs and third-party services. Support for OpenAPI on REST and Web transports enables seamless exposure of RESTful APIs, fostering interoperability with cloud-native and distributed architectures. Real-time messaging and streaming with Kafka allow for high-throughput, event-driven integration, expanding your application's connectivity and reach.

05

Long-Term Support and Roadmap Alignment

OpenEdge 12.8 is an LTS release, offering years of stability, security updates and maintenance—crucial for business continuity and peace of mind as older versions like 11.7 reach end of life. With OpenEdge 11.7 now retired, continued use exposes your business to a lack of support and updates, compatibility limitations and potential heightened security vulnerabilities. OpenEdge 12.8 provides ongoing support with the latest certified operating systems, access to the latest features and a platform ready for future growth and digital transformation.

Summary Table: Key Benefits of OpenEdge 12.8

Benefit Area	OpenEdge 12.8 Advantage
Security & Compliance	DDM; JWE; HSM; TLS 1.3
Ongoing Support	LTS; regular updates; technical support
Integration	Kafka; OpenAPI; RESTful services; cloud-native architectures
Performance & Scalability	Multi-threaded OpenEdge Database Server and index checks; OpenTelemetry; online database maintenance; OpenEdge Command Center
Developer Productivity	AI Coding Assistant in PDSOE; faster builds; advanced DevOps tooling

Next Steps: Starting Your Upgrade Journey

Upgrading from earlier versions of the OpenEdge platform—whether from an LTS release like 11.7 or 12.2, or from an Innovation version—is a strategic investment in your organization's resilience, security posture and future growth. If your organization is already on maintenance, you're in an excellent position because you can upgrade to the latest version at no additional licensing cost. Progress provides comprehensive upgrade guides and tools to simplify the transition, minimize risk and promote business continuity.

If you are unsure where to begin, [our team is ready to support you](#) at every stage of your modernization journey. We offer expert guidance, tailored assessments and hands-on assistance to help you plan and execute a successful upgrade—whether you need to review your current architecture, analyze integration points or develop a detailed roadmap for your unique environment.

Partnering with Progress Professional Services offers you:

- **Deep expertise and proven methodology:** Our team applies industry-leading modernization strategies, including API-first approaches, Continuous Integration and Continuous Delivery (CI/CD) and DevOps best practices.
- **Tailored, client-centric solutions:** Every engagement is customized to your business goals and technical requirements, providing a smooth and relevant modernization journey.
- **Comprehensive support and enablement:** We offer end-to-end services, from initial assessment to post-launch support, and provide training so your team is empowered for ongoing success.
- **Tangible business outcomes:** Our approach accelerates time to market, reduces operational costs and delivers modern user experiences that drive productivity and satisfaction.

Don't wait—begin planning your upgrade today to maintain your competitive edge and protect your business for the digital age.



Learn more at www.progress.com/campaigns/openedge/12-8-migration-resources

About Progress Software

[Progress Software](#) (Nasdaq: PRGS) empowers organizations to achieve transformational success in the face of disruptive change. Our software enables our customers to develop, deploy and manage responsible AI-powered applications and digital experiences with agility and ease. Customers get a trusted provider in Progress, with the products, expertise and vision they need to succeed. Over 4 million developers and technologists at hundreds of thousands of enterprises depend on Progress. Learn more at www.progress.com.

/progresssw
 /progresssw
 /progresssw
 /progress-software
 /progress_sw_