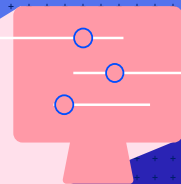




Applications & Experiences That Set You Apart

Progress enables organizations to develop and deploy their mission-critical applications and experiences, as well as effectively manage their data platforms, cloud and IT infrastructure. With our reliable software, you can develop what you need, deploy where and how you want, then manage it all more safely and securely.

With Progress, your organization can drive faster cycles of innovation, fueling the momentum you need to succeed in an ever-evolving marketplace.





Putting You at the Center

Progress has staying power because everything we do is built around you. Your business. Your applications. Your experiences. Your goals. From our products to the expert support available when you need it, we make the lives of technology professionals easier.

From global corporations to vibrant startups to passionate developers, our people, skills and technology are here to serve you.



Progress That's Built Around You.

Investing with Purpose

Progress invests about 18% of our revenue back into research and development, keeping us on-point when it comes to the latest technology advances. Having a disciplined approach has made Progress the right choice for businesses for more than 40 years.

Who We Are

Our Vision

Our vision is to propel business forward in a technology-driven world.

Our Mission

Our mission is to be the trusted provider of the best products to develop, deploy and manage responsible AI-powered applications and experiences.

70%

Fortune 500 use Progress

100K

Enterprises and 6M+ business users run on Progress

100%+

Customer Net Retention Rate

4M+

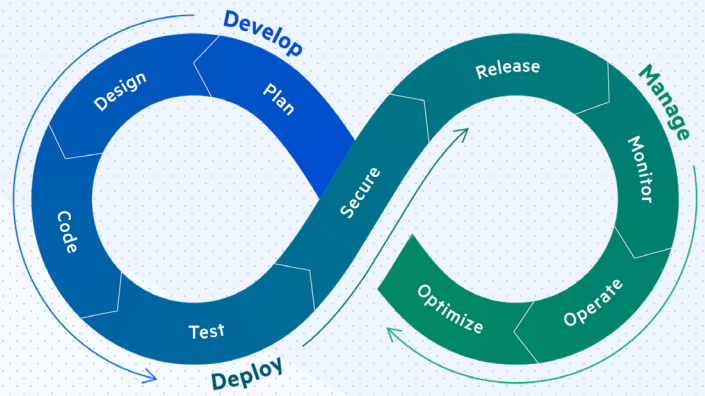
Strong developer community

Enterprises Worldwide Rely on Progress



Our Products

With Progress, businesses can automate the process by which apps are developed, deployed and managed. This makes critical data and content more accessible and secure, leading to both competitive differentiation and business success.



Develop

Telerik®

The comprehensive collection of .NET and JavaScript tools for developing modern business applications. Includes feature-rich, high-performance UI components for web, desktop and mobile, embedded reporting and developer-friendly design tools.

Kendo UI®

A powerful collection of JavaScript UI components for developing modern business applications. Developers can easily build high-quality UI with professionally designed themes, developer-friendly design tools and consistent API.

Sitefinity®

Digital content and experience management suite of intelligent, ROI-driving tools for marketers and an extensible toolset for developers to create engaging, cross-platform digital experiences.

NativeChat®

Development platform to rapidly create and deploy purpose-built, AI-driven chatbots to automate workflows. Conversational UI engages customers with a natural language interface.

Corticon®

Decision automation platform to transform user experiences by streamlining and automating complex business rules—without having to code.

Deploy

Chef®

Automation software for continuous compliance and delivery of critical applications and infrastructure.

Test Studio®

Modern and easy-to-use automated functional UI, API and load testing platform with a super intuitive test recorder and patented hybrid element location, maximizing test stability and coverage across web and desktop.

Fiddler™ Everywhere

Secure and modern, easy-to-use, cross-platform web debugging proxy for rapidly and reliably debugging HTTP(S) network traffic on Windows, Mac and Linux.

Manage

Kemp® LoadMaster®

Reliable, scalable application load balancing with layered security, available as virtual, hardware and cloud-native, with powerful SaaS management.

Flowmon®

Network observability platform with AI-powered detection for cyberthreats, anomalies and fast access to actionable insights for greater network and application performance across hybrid cloud ecosystems.

WhatsUp® Gold

IT infrastructure monitoring software providing visibility into network devices, servers, virtual machines, cloud and wireless environments to quickly find and fix network problems before users are impacted.

MOVEit®

Managed file transfer and automation software that helps customers secure sensitive files at rest and in transit, promotes reliable business processes and supports compliance with data security requirements.

WS_FTP®

Business-grade FTP file transfer software, featuring robust data security features before, during and after transit.

Mission Critical Data and App Platform

OpenEdge®

Application development platform for running business-critical applications needing high performance, high availability and flexible deployment options for extensibility, scalability, security and performance.

DataDirect®

Pre-built cloud and on-premises data connectivity solutions for Relational, NoSQL, Big Data and SaaS data sources.

MarkLogic®

Enterprise-grade multi-model data management solution to unlock value from complex data for operational and analytical excellence.

Semaphore™

Semantic AI platform that transforms data into meaningful insights. Empowers organizations to manage knowledge models, automatically extract and classify meaning from both structured and unstructured data to generate rich semantic metadata.

Develop the applications and experiences your business needs with Progress.

Learn more at [progress.com](https://www.progress.com) or contact your Progress representative.

You at the Center. Always.

We're in it for your outcome. By creating products that deliver faster cycles of innovation, we accelerate your path to success. Because Progress isn't only our name, it's also what we want you to achieve. We look forward to showing you how.

For a full list of Progress offices and contacts, please visit our website at progress.com/company/offices



For more information on what Progress can do for you, **contact us at 1-800-477-6473** or visit progress.com/company/contact

About Progress

Progress (Nasdaq: PRGS) empowers organizations to achieve transformational success in the face of disruptive change. Our software enables our customers to develop, deploy and manage responsible AI-powered applications and experiences with agility and ease. Customers get a trusted provider in Progress, with the products, expertise and vision they need to succeed. Over 4 million developers and technologists at hundreds of thousands of enterprises depend on Progress. Learn more at www.progress.com

© 2024 Progress Software Corporation and/or its subsidiaries or affiliates.
All rights reserved. Rev 2024/07 | RITM0249582

Worldwide Headquarters

Progress Software Corporation
15 Wayside Rd, Suite 400, Burlington, MA 01803, USA
Tel: +1-800-477-6473

- facebook.com/progresssw
- twitter.com/progresssw
- youtube.com/progresssw
- linkedin.com/company/progress-software
- [progress_sw_](https://instagram.com/progress_sw_)