



Datenreplikation - Theorie und Praxis

Niels Wilke & Stefan Bolte



Vorstellung

Niels Wilke

- Inside Account Executive



Stefan Bolte

- Principal Solution Architect



Agenda

- Kurzer Überblick – Strategie Progress
- Datenreplikation
- Fragen & Antworten

About Progress

Global leader in application development and digital experience technologies

Publicly traded on the NASDAQ (PRGS)



1,700+

ISV partners build their applications on Progress technologies



100,000+

Enterprises run their mission-critical business systems on Progress



2+ million

Developers build using Progress technologies



6+ million

Business users work with applications that run on Progress technologies



100s of millions

Of consumers use applications that run on Progress technologies

**Jedes Unternehmen sollte Technologien,
die heute bereits verfügbar sind, bewusst
und klug einsetzen um sich einen Vorteil zu
verschaffen.**

Progress Approach



Mobile



Web



Chatbots



Wearables



AR/VR



Emerging Channels

Adaptive Experience



Native Apps



Responsive Web



PWA



Conversational

Cognitive Cloud



Serverless
Cloud Platform



Intelligence
as a Service



Rules
as a Service



Content
as a Service



Mission-critical
App Platform

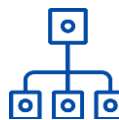


Management
and
Monitoring

Connected Data



Data Connectivity and Integration / Secure File Transfer



Systems of Record



Big Data



Internet of Things



Files and Reports

Progress Product Portfolio



Mobile



Web



Chatbots



Wearables



AR/VR



Emerging Channels

Adaptive Experience



NativeScript

Progress®
Kendo UI®

Progress®
Telerik®

Progress®
Kinvey® Chat

Progress®
Unite UX

Cognitive Cloud

Progress®
Kinvey

Progress®
DataRPM™

Progress®
Corticon®

Progress®
Sitefinity™

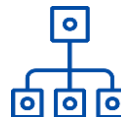
Progress®
OpenEdge®

Progress®
WhatsUp®Gold

Connected Data

Progress®
DataDirect®

Progress®
MOVEit®



Systems of Record



Big Data



Internet of Things



Files and Reports

Datenreplikation mit Pro2



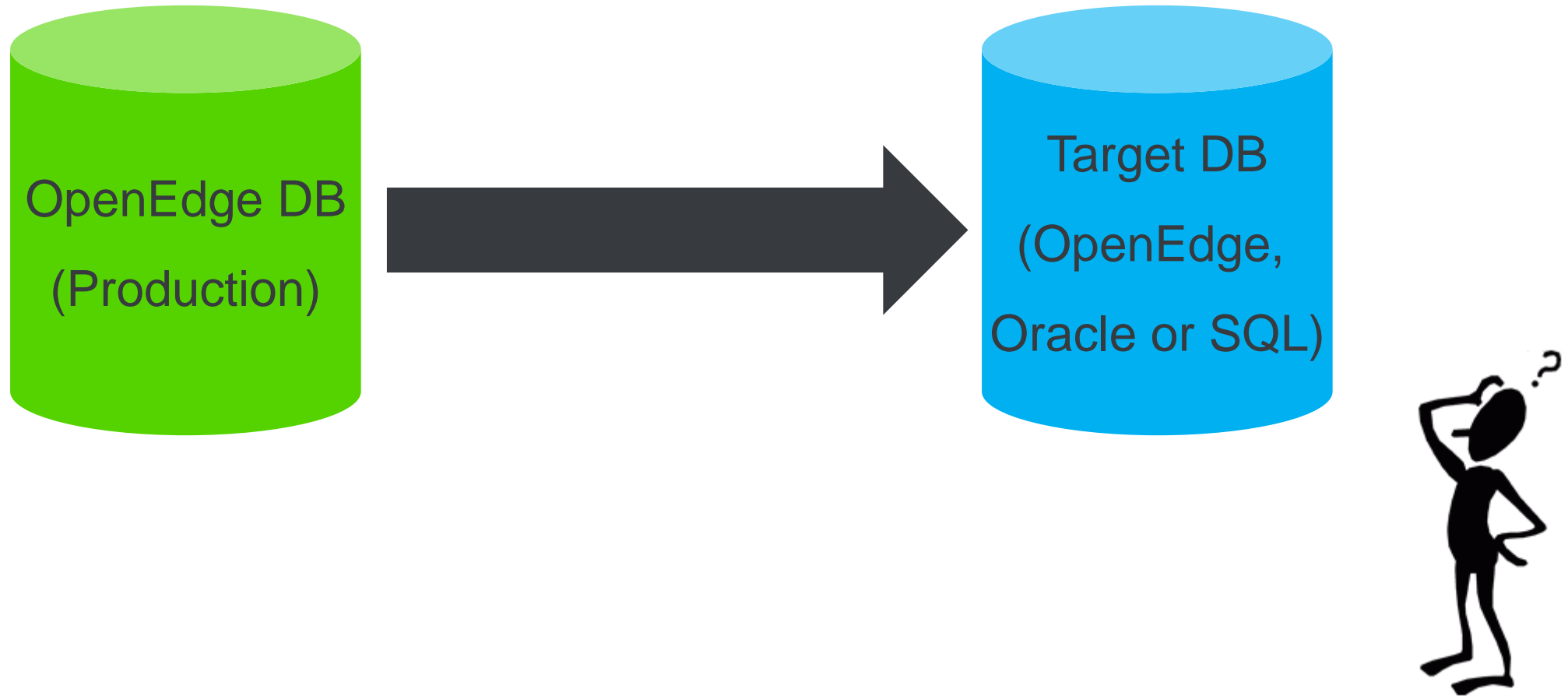
Current Business Needs

- Timely Business Data / BI
- Alternative Views of Data
- Heterogeneous Application Integration
- Data Consolidation / Archival
- Reporting

The Challenge

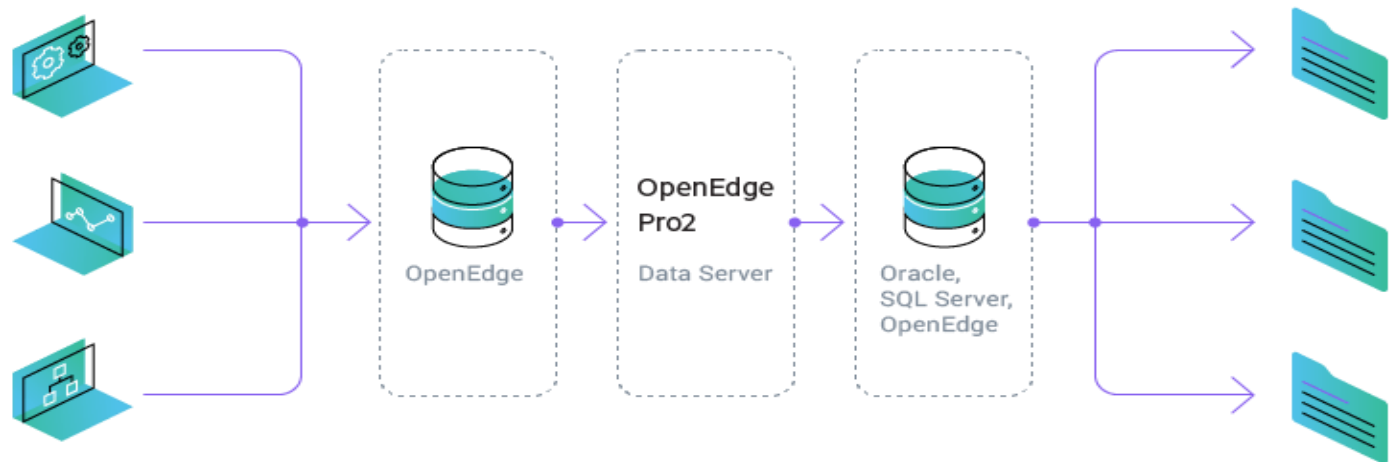
- Application-level replication is difficult
 - Maintaining connectivity
 - Managing different data types and data structures
- Compliance
 - Export of personal data must be tightly controlled
 - Unencrypted data transfers (i.e. via ASCII files) is not permitted

So what do you do?

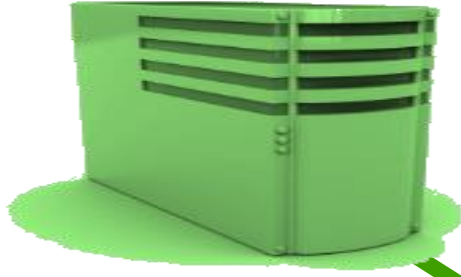


Pro2 is the Solution!

- Near real-time data replication
- Utilizes proven OpenEdge technology
- Complete replication flexibility & capability
- Supports Versions 9.X –12.0+



OpenEdge



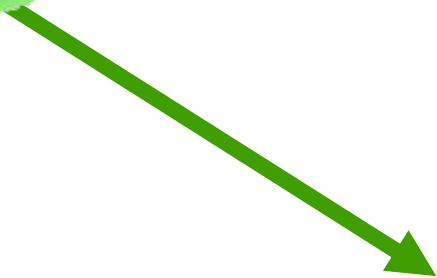
SAP



Oracle ...



Data Replication



**Data Warehouses
Business Analytics
Decision Management**

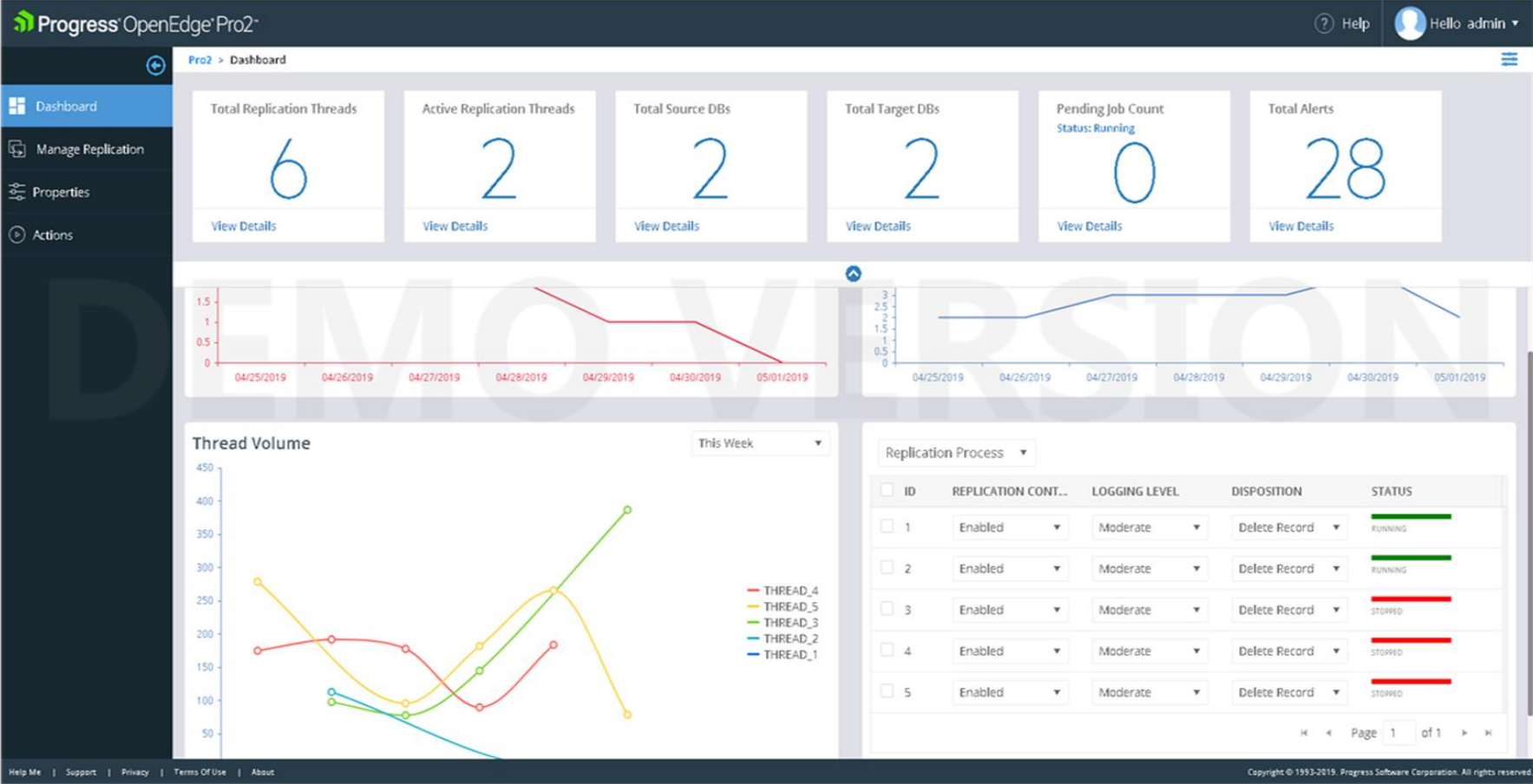
With Pro2 You Can

- Tailor the data to match your specific needs
 - Provide accurate data in near real-time to support better business decisions
 - Leverage the value of the data in your system(s)-of-record
 - Overcome technology issues
 - Make data available to 3rd parties in a safe and controlled manner
-
- Note: This is not for Disaster Recovery!

Key New Features – Pro2 6.0

- New UX dashboard
- Replication Wizard
- Improved installation process
- Bulk-load capability

UX dashboard improves efficiency, productivity and allows proactive monitoring of performance and analytics – beautiful and intuitive



Version 6.0

Job runner, UX actions and UX mapping allow control of processes within the browser

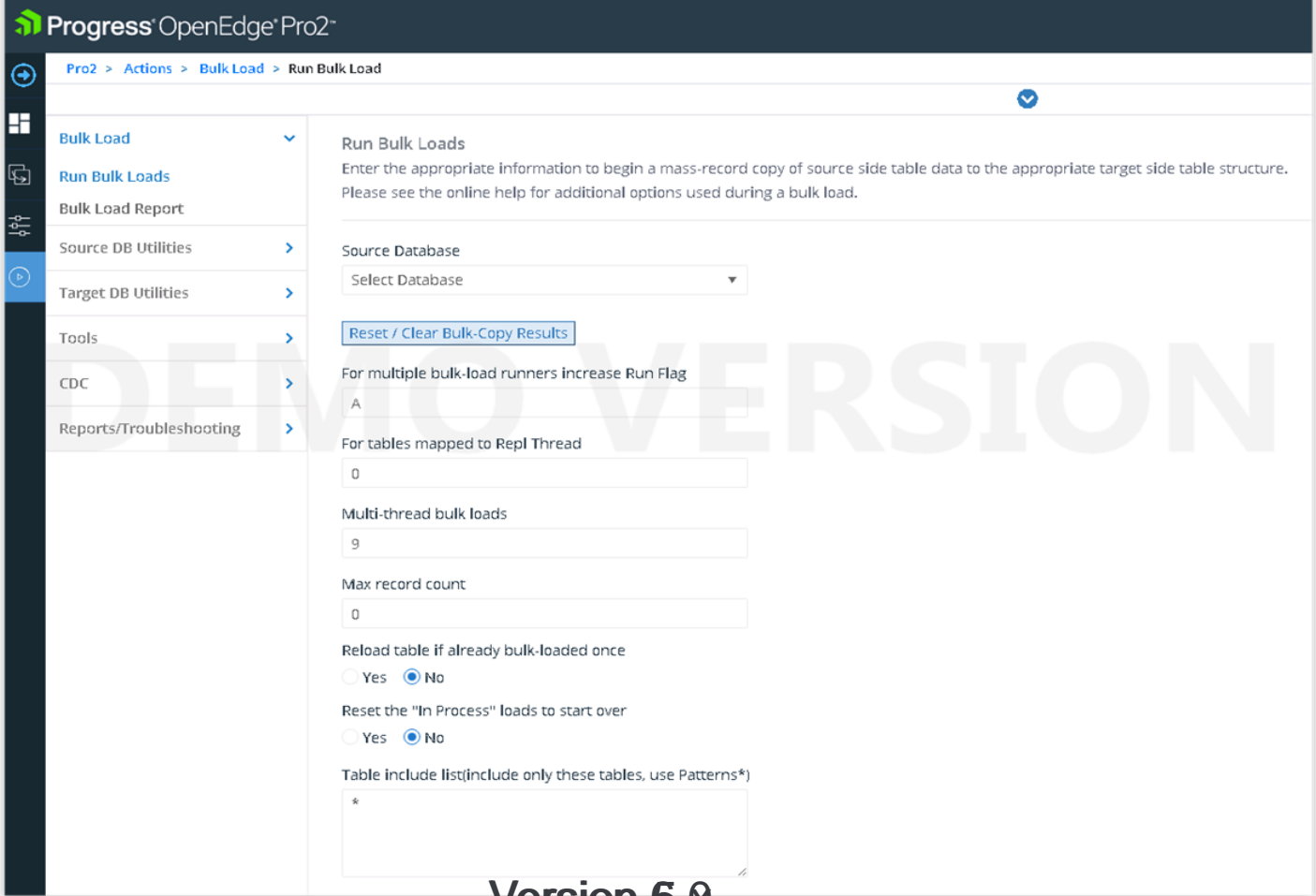
The screenshot displays the Progress OpenEdge Pro2 web interface. The top header shows the logo and a 'Help' button. The breadcrumb navigation indicates the current path: Pro2 > Actions > Tools > Load Map File. A left sidebar contains navigation options: Dashboard, Manage Replication, Properties, and Actions (which is highlighted). The main content area features a dashboard with five metrics:

Metric	Value	Action
Total Replication Threads	6	View Details
Active Replication Threads	0	View Details
Total Source DBs	1	View Details
Total Target DBs	1	View Details
Pending Job Count Status: Stopped	2	View Details

Below the dashboard, the 'Load Map file' section is active. It includes instructions: 'Choose a MAP file that contains the contents of saved Pro2 Mapping that you wish to load. Note: Mapping for all databases will be removed and the contents of the map file will generate new mapping data.' The 'Upload Map file' section contains a 'Select files...' input field and a 'Submit' button. The left sidebar also lists other actions: Bulk Load, Source DB Utilities, Target DB Utilities, Tools (expanded), Reset Alarms, Generate Encrypted Password, Reassign Queue Thread, Load Properties, Load Map File (selected), and Save Map File.

Version 6.0

Bulk-load functionality interface eases set up and maintenance. Can be managed directly from the browser



Version 6.0

Conclusion

- Real-Time Replication for Reporting
 - Your data, Your way
- Low Overhead and Easy Administration
- Well established product
 - With up-to-date features
 - Constantly evolving with the help of CVP

**Klingt ja alles sehr schön,
aber gibt es auch Praxis-
Beispiele?**



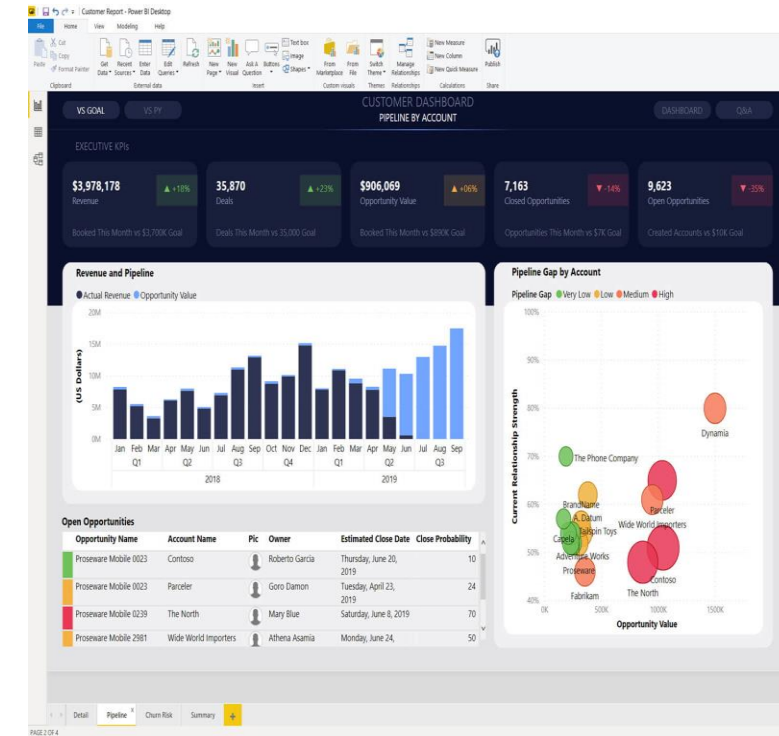
Die Ausgangssituation

- Kunde ist Logistiker in der Automobilindustrie
- Setzt ein OpenEdge-basiertes ERP ein und eine Reihe weiterer Anwendungen wie ein anderes CRM, LVS und mehr.
- Wunsch:
 - Analysen über die Daten aller Anwendungen ermöglichen
 - Anwender möchten diese Analysen auch selbstdurchführen können



Die Lösung

- Einrichten eines zentralen DataWarehouse
- Zentrales BI-Werkzeug für bereitgestellte und eigene Analysen.
- Daten aller Geschäftsanwendungen werden in das DWH übertragen.
- Die Daten des OpenEdge-basierten ERP werden umgehend mittels Pro2SQL synchronisiert, so dass aktuelle Änderungen sofort kaufmännisch bewertet werden können.
- Das DWH dient hier übrigens auch als Quelle für B2B-Schnittstellen



Das Ergebnis

- Gewünschte Transparenz gewonnen
- Zufriedene Anwender
- Zufriedener Projektleiter



Wenn einer der Punkte zutrifft, brauchen Sie Pro2

- Sie wollen ein zentrales DataWarehouse aufbauen
- Sie wollen Daten zeitnah synchronisieren
- Sie wollen die Reportingzugriffe von der Produktivdatenbank fernhalten (zu hohe Last)

Der Start mit Pro2 in 3 Schritten

Initial business meeting with your Progress Account Representative

This will include a discussion of business objectives, the options for embedding Pro2 and the associated commercial models, and the startup process & costs.

Conference call with a member of the Progress Pro2 Services Team

A technical 'due diligence' session to insure that there are no technical 'red flags', and that you are aware of what changes are required in your application(s).

A 3-5 day Progress Pro2 Services engagement (remote)

Progress will install the Pro2 development and test system on one of your servers

Our consultants will work with your engineering team to walk them through the process of embedding Pro2.

They will also advise them on how to test & QA the solution plus offer any technical assistance in that process.

