

Progress MarkLogic FastTrack

Rich Visual UI to Explore Connected Data

DATA SHEET

Built for Full-Stack Developers

Component-Based Toolkit

Assemble the exact solution you need to help you meet your requirements every time with out-of-the-box functionality, easy configuration and customization.

Data Access Layer

Access the data you need with no ETL or API integrations required and no prior knowledge of MarkLogic Server.

Full-Text Search

Implement a high-performance full-text search in hours. Set facets and custom filters using date, category and range components.

Visualization Components for Every Data Model

A complete set of synchronized multi-model visualization components perfect for presenting every data type.

Sample Apps Included

Get a complete application blueprint with our real-life demo scenarios that showcase how to build for the most common use cases.

Progress® MarkLogic® FastTrack™ is a React UI toolkit for building search-to-visualization applications for exploratory data analysis with MarkLogic—fast.

Simplify Application Development

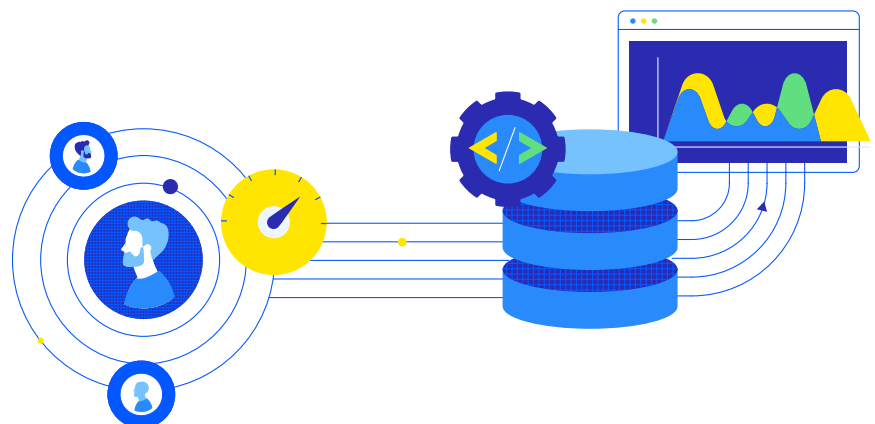
Build sophisticated exploratory data analytics applications up to 90% faster with ready-to-use, high-performance UI components that come integrated with MarkLogic Server.

Visualize Data in Context

Combine visualization techniques to see the full picture. Investigate underlying connections, uncover patterns and draw accurate insights with powerful search, dynamic filters and interactive graphs.

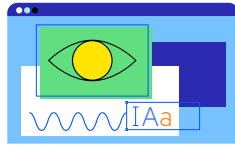
Drive Real Business Impact

Bring intelligence where it's needed to answer complex questions and enable rapid progress on new initiatives. Accelerate, scale and easily share insights across teams and use cases.



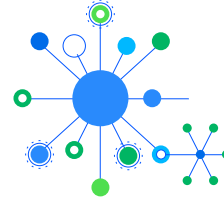
Navigate Complex Data through Multidimensional Visualizations

Search across all data. See every dimension. Solve hard cases.



Full-Text Search

Search by meaning and display instant, relevant results in the most intuitive, user-friendly UX. Query semantic data in MarkLogic with SPARQL.



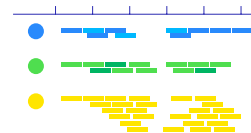
Network Analysis

See relationships between people, things and meaning to discover dependencies and causes. Drill up and down the data and zero in on specific points.



Geospatial Analysis

Visualize data in relation to real-world locations and draw polygons to trace origin, track activity, compare distribution or analyze the impact of a policy change.



Temporal Analysis

Trace back events and see connected data change over time. Add an interactive timeline dimension to help users understand complex event sequences.



Understand Your Data Landscape






About Progress

Progress (Nasdaq: PRGS) empowers organizations to achieve transformational success in the face of disruptive change. Our software enables our customers to develop, deploy and manage responsible, AI-powered applications and experiences with agility and ease. Customers get a trusted provider in Progress, with the products, expertise and vision they need to succeed. Over 4 million developers and technologists at hundreds of thousands of enterprises depend on Progress. Learn more at www.progress.com

© 2024 Progress Software Corporation and/or its subsidiaries or affiliates.
All rights reserved. Rev 2024/07 | RITM0249832

Worldwide Headquarters

Progress Software Corporation
15 Wayside Rd, Suite 400, Burlington, MA 01803, USA
Tel: +1-800-477-6473

 facebook.com/progresssw
 twitter.com/progresssw
 youtube.com/progresssw
 [/progress-software](https://in.linkedin.com/company/progress-software)
 [progress_sw_](https://www.instagram.com/progress_sw_)