

**PeerDirect  
PDRE Deployment  
Installation Guide**

**Version 7.4**

Progress® software products are copyrighted and all rights are reserved by Progress Software Corporation. This manual is also copyrighted and all rights are reserved. This manual may not, in whole or in part, be copied, photocopied, translated, or reduced to any electronic medium or machine-readable form without prior consent, in writing, from Progress Software Corporation.

The information in this manual is subject to change without notice, and Progress Software Corporation assumes no responsibility for any errors that may appear in this document.

The references in this manual to specific platforms supported are subject to change.

PeerDirect is a registered trademark of Progress Software Corporation or one of its subsidiaries or affiliates in the U.S. and Canada.

Java and all Java-based trademarks and logos are trademarks or registered trademarks of Sun Microsystems, Inc. in the U.S. or other countries.

Any other trademarks or service marks contained herein may be the property of their respective owners.

This product includes software developed by the OpenSSL Project for use in the OpenSSL Toolkit (<http://openssl.org/>).

This product uses parts of the SFL package, Copyright © 1996-2000 iMatix Corporation 1991-2000 iMatix Corporation (<http://www.imatix.com>).

This product uses portions copyright © 1997-2003 eHelp Corporation. All rights reserved.

This product contains material that is © 1994-1996 DUNDAS SOFTWARE LTD. All rights reserved.

Title: PeerDirect PDRE Deployment Installation Guide  
Product: PeerDirect Replication Engine version 7.4  
Published: March 2005

Published by Progress Software Corporation  
14 Oak Park  
Bedford, Massachusetts 01730 USA  
[www.peerdirect.com](http://www.peerdirect.com)

# Contents

---

## Preface

Who is This Guide For . . . . .	v
What is in This Guide. . . . .	vi
Notation Conventions. . . . .	vi
Additional References . . . . .	vii
How to View This Guide Online. . . . .	vii
Customer Support . . . . .	viii

## Chapter 1: Welcome to PDRE Deployment

Overview . . . . .	10
Supported Platforms . . . . .	12
Hardware . . . . .	12
Supported Databases . . . . .	13
Supported ODBC Drivers and Replication Adapters . . . . .	13
Product Licenses . . . . .	14
About the Install Program . . . . .	14
Installation Components . . . . .	14
Installation Options . . . . .	16
Deployment Options . . . . .	17
Replication Engine and Multiple Databases on Same Computer. . . . .	17
Replication Engine and Single Database on Same Computer . . . . .	18
Replication Engine and Database on Different Computers . . . . .	18
Selecting a Network Topology . . . . .	19
Hub and Spoke Topology. . . . .	20
Peer to Peer Topology . . . . .	20
Multi-Tier Topology. . . . .	21
How to Design a Replication Network . . . . .	21
What is Next . . . . .	22

## Chapter 2: Installing PDRE Deployment

Planning Your Install . . . . .	24
Before You Install . . . . .	24

Installing PDRE Deployment .....	25
Updating a PDRE Deployment Installation .....	33
Upgrading Replication Rules to 7.4 .....	39
Uninstalling PDRE Deployment .....	42
What is Next .....	42

# Preface

---

This guide provides instructions on how to install PDRE Deployment. It walks you step-by-step through each install phase and provides you with information about what to do next.

Before you install, be sure to read the *Release Notes*. Release Notes provide important information about the latest version.

After you install the software, you are required to perform additional steps to prepare your database for activation and replication. This information is described in the *PeerDirect Replication Engine Getting Started Guide*.

For more information about deployment and advanced features, such as fragments and work sets, refer to the *PeerDirect Replication Engine Developer's Guide*.

## Who is This Guide For

This guide is intended for anyone who is responsible for setting up and maintaining a PeerDirect Replication Network. This person might also be responsible for administering the network's software components, including PeerDirect replication servers and adapters, databases, and ODBC drivers. In this guide this role is referred to as the *PeerDirect administrator*.

A PeerDirect administrator should already be a certified database administrator for the databases they are replicating. The PeerDirect documentation is specific to PeerDirect products and only offers guidelines for integrating third-party vendor and Open Source databases, as part of a PeerDirect Replication Network.

## What is in This Guide

This guide contains the following chapters:

- [“Welcome to PDRE Deployment,”](#) on page 9.

Provides a general introduction to the installation process and describes options for configuring your Replication Network.

- [“Installing PDRE Deployment,”](#) on page 23.

Outlines the steps for installing the Replication Engine.

## Notation Conventions

This guide uses the following notation conventions:

- The notation **Menu>Choice** indicates that you should select an item from a menu. For example, the notation **File>Exit** means "From the **File** menu select **Exit**."
- *Italic text* indicates the title of a book or emphasizes the first usage of a term that is repeated in the guide.
- `Monospace text` indicates commands, functions, code examples, and names of files and directories. For example:

```
C:\Program Files\PeerDirect\setup.exe
```

- *Monospace italic text* indicates that a term can be replaced by a literal value. Typically the term is enclosed in brackets (< >) and used in example text, such as command lines or directory paths. The user is expected to replace the term with an appropriate value. For example:

```
<drive>:\<install_dir>\setup.exe
```

where `<drive>` can be replaced by the drive name "C" and `<install_dir>` can be replaced by the installation directory name "Program Files\PeerDirect."

## Additional References

The following Replication Network documentation is available:

*Replication Engine Getting Started Guide*

A guide that provides details on planning, designing, and preparing to implement a PeerDirect Replication Network.

*Replication Engine Designer's Guide*

A guide that provides details on defining replication rules.

*Replication Engine Administrator's Guide*

A guide that provides details on activating and maintaining a Replication Network.

*Replication Engine SDK Installation Guide*

A guide that describes the procedure for installing the PeerDirect Replication Engine SDK software. It also describes how to define replication rules and set up replication sites in a PeerDirect SDK environment.

*PDRE Deployment Installation Guide*

A guide that describes the procedure for installing the PDRE Deployment software.

## How to View This Guide Online

Online versions of this guide are available in Adobe™ Acrobat™ (PDF) format on the PeerDirect Distributed Enterprise Software Development Kit CD-ROM. All PeerDirect product documentation is located in the %PDRE%\pdre\docs directory.

## Customer Support

If you encounter a technical problem, and are covered by a PeerDirect Customer Support agreement, send e-mail to our support team at *support@peerdirect.com*.

The PeerDirect Customer Support team is dedicated to providing rapid, high-quality response to customer problems. When contacting Customer Support, please provide the following information:

- Case number (if you are calling about a previous problem).
- Your name.
- Your company name and location (city, state or province, and country).
- Contact information.
- Product name and version.
- Operating system.
- Database type.
- Detailed problem description that includes specific symptoms, observations and any troubleshooting steps you might have tried.
- Attach activity (.log) log file(s) for the component(s) that you are having problems with.

---

## Welcome to PDRE Deployment

This chapter introduces you to PDRE Deployment and consists of the following information:

- [Overview](#), on page 10.
- [Supported Platforms](#), on page 12.
- [Supported Databases](#), on page 13.
- [Product Licenses](#), on page 14.
- [About the Install Program](#), on page 14.
- [Deployment Options](#), on page 17.
- [Selecting a Network Topology](#), on page 19.
- [How to Design a Replication Network](#), on page 21.
- [What is Next](#), on page 22.

## Overview

PDRE Deployment provides a production environment for a Replication Network. PDRE Deployment installs everything you need to run the Replication Engine.

A Replication Network is a configuration of Complete, High Availability, and Low Availability sites. Each site can be either one of the following:

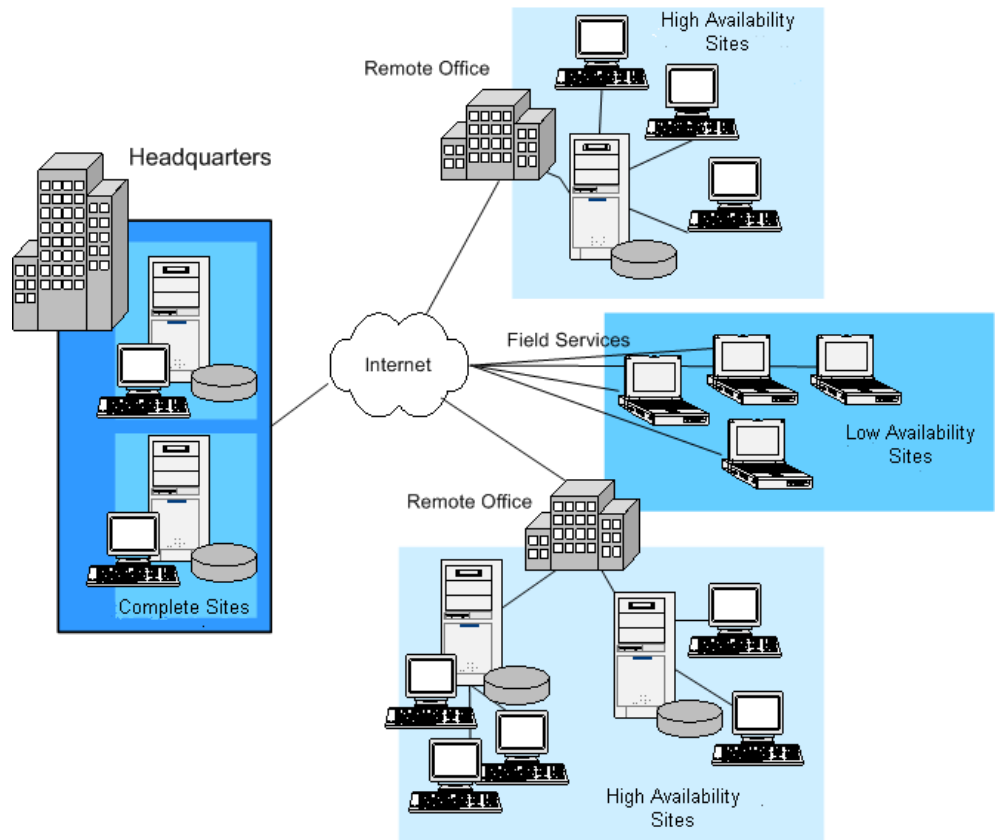
- A computer with its own local database
- A shared database

On each site, a copy of the database runs locally and therefore, is always available. In the background, the PeerDirect Replication Engine manages changes to your database by replicating and synchronizing data updates with other active sites on the network.

The following figure shows a replication network that consists of two Complete sites (home office) connected over a TCP/IP network to several High Availability and Low Availability sites set up in remote field or office locations.

[Figure 1–1](#) shows an example of a Replication Network.

Figure 1–1: PeerDirect Replication Network



You can set up a PeerDirect Replication Network in several different ways, but for greatest benefit, it is recommended you select one that matches the business requirements for distributing application data within your system. Each Replication Network manages the database for one or more applications (or unrelated database tables) that you want to connect across your organization. There is no limit to the number of Replication Networks you can set up.

For more information about laying out a Replication Network, refer to the *PeerDirect Replication Engine Getting Started Guide*

For assistance in planning your PeerDirect Replication Network, contact your PeerDirect account manager or send e-mail to PeerDirect Technical Support at [support@peerdirect.com](mailto:support@peerdirect.com).

## Supported Platforms

PDRE Deployment supports the following platforms:

- AIX, version 5.2 or higher
- Red Hat Linux, version 9.0
- Red Hat Enterprise Linux version 3.0
- SUSE Linux, version 8.2 or higher
- Windows 2000 Server or Workstation, Service Pack 4 or higher
- Windows 2003 Server
- Windows XP

## Hardware

Pentium-based computer with a minimum of 64 MB<sup>1</sup> of memory, and a minimum of 100 MB<sup>2</sup> of disk space.

- NOTE:**
1. 128 MB of memory is recommended.
  2. Minimum physical memory should be at least two times the size of the largest individual record to be replicated. For example, if your database has a single record containing 50 MB of data, then a minimum of 100 MB of disk space is required to avoid performance degradation.

## Supported Databases

The Data Replication Engine, supports the following databases:

- IBM DB2 Universal Database 7.2 and 8.1
- Microsoft Data Engine (MSDE) 2000
- Microsoft SQL Server 2000
- Oracle 8.1.6, 8.1.7, and Oracle 9i

For more information regarding each database supported by the Distributed Enterprise environment, refer to the *PeerDirect Replication Engine Getting Started Guide*.

## Supported ODBC Drivers and Replication Adapters

The following ODBC drivers and replication adapters have been certified for use with PDRE Deployment.

**Table 1–1: PeerDirect-Supported Drivers and Adapters**

Database	Supported Drivers and Adapters
IBM DB2 Universal Database 7.2 and 8.1	Peer Direct DB2
MSDE and Microsoft SQL Server 2000	Peer Direct SQL Server
Oracle 8i and 9i	Peer Direct Oracle, Peer Direct Oracle8

**NOTE:** Some ODBC drivers do not meet the requirements of the Replication Engine and could cause problems, if they are used.

## Product Licenses

There are two types of PeerDirect license files — PeerDirect Network License (PNL) and PeerDirect Developer License (PDL).

The PeerDirect Network License (PNL) enables you to activate a vendor-specific database and replicate data with other databases in a Replication Network. You must obtain database software separately and install it according to vendor instructions, before you install PDRE Deployment.

The PeerDirect Developer License (PDL) lets you enable any database type for replication, but it does not let you deploy a Replication Network. The Developer License lets you define rules for a database, as for example a Microsoft SQL Server database, but you would then need a Microsoft SQL Server Replication Network License before you could activate the sites and deploy the Replication Network.

PeerDirect product licenses are distributed by PeerDirect Technical Support. If you need assistance, please contact them at [support@peerdirect.com](mailto:support@peerdirect.com).

## About the Install Program

The PDRE Deployment install program uses a Web-based installation program. The Install Program is easy-to-use and leads you through each phase of the installation process.

PDRE Deployment includes all components listed in [Installation Components](#), on page 14. The install program installs these components into the specified installation directory. To install PDRE Deployment, see “[Installing PDRE Deployment](#),” on page 23.

## Installation Components

PeerDirect is a software system for replicating and synchronizing data stored in databases. It supports asynchronous, bidirectional database replication across TCP/IP networks and replicates structured data between both homogeneous and heterogeneous database types.

PDRE Deployment installs the following components:

Components	Description
Replication Engine	Core replication component. The Replication Engine detects changes made to databases since the last replication session, and propagates these changes to other replication-enabled sites on the Replication Network. It performs all replication tasks including database updates, inserts, and deletions.
Administrator (Windows only)	Administers replication schedules and subscribes work set slices.
Replication Engine User Interface"	Initiates and monitors data replication sessions.
Replication Engine Utilities	Performs various administration and configuration tasks, including enabling of the database activation process.
Database ODBC Drivers and Replication Adapters	PeerDirect ODBC drivers and replication adapters for your database.

After you install PDRE Deployment, you can use the Administrator to define replication schedules, subscribe to work set slices, and change site information.

**NOTE:** If you are installing on Linux, you will need to install the PDRE Deployment on a Windows system and use the `dinstc` utility to establish the connection from the Windows system to the Replication Engine running on the Linux system. This enables the Administrator to connect to the Replication Engine on a Linux system and administer the specified database in the Replication Network.

## Installation Options

The PeerDirect installation program gives you two installation options.

- **Quick Installation** — installs the Replication Engine components to the specified installation directory. On **Linux**, you must also specify a user name or account that will own the Replication Engine daemon.

Select this method for an easy installation. This option lets you select the directory where you want PeerDirect software installed and automatically configures the installation using the default settings for the PDRE Runtime edition.

- **Custom Installation** — installs only components you select. For certain components, you may also select server ports, server start-up preferences, and other settings. The install program also lets you add new software components to the installation.

Select this method if you want to change the default component settings or to install a subset of the components available. For the Replication Engine, you must select one of two editions:

- **Runtime Edition** — installs the Replication Engine and Administrator. This is the standard PDRE Deployment installation.
- **Client Access Edition** — installs the Administrator and APIs, but does not install the Replication Engine. Select this edition when you are running PeerDirect replication servers on Linux and need to use the Administrator.

## Deployment Options

A Replication Network can be deployed in several different ways. You should select the one that closely matches the way in which you want to distribute the database's data.

This section outlines the following ways:

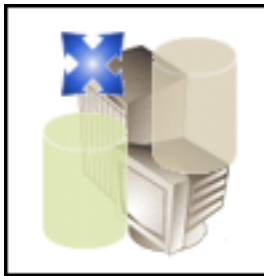
- [Replication Engine and Multiple Databases on Same Computer](#), on page 17.
- [Replication Engine and Single Database on Same Computer](#), on page 18.
- [Replication Engine and Database on Different Computers](#), on page 18.

### Replication Engine and Multiple Databases on Same Computer

In this scenario, each computer within the network has 2 or more databases and the PeerDirect Replication Engine installed. This type of deployment is useful in a testing or non-production environment.

This scenario, mimics a typical development environment.

**Figure 1–2: Replication Engine and Multiple Databases on Same Computer**

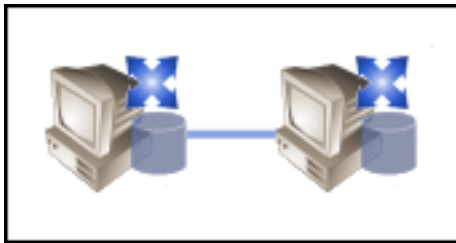


## Replication Engine and Single Database on Same Computer

In this scenario, each computer within the network has a single database and the PeerDirect Replication Engine installed. One computer is activated as the First Site while additional computers are activated as High Availability, or Low Availability sites. The First Site contains all of the data that comprises a Replication Network, while the High Availability or Low Availability sites only contain that data that is of interest to its users.

This scenario mimics a typical wide area network deployment, in which two sites exist in separate local area networks.

**Figure 1-3: Replication Engine and Single Database on Same Computer**

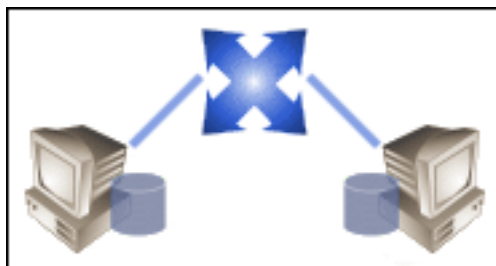


## Replication Engine and Database on Different Computers

In this scenario, computers within the network have a single database installed, and a different computer has a single copy of the Replication Engine installed. The single instance of the Replication Engine interacts with all of the databases on the network.

This scenario is best suited for local area network deployment.

**Figure 1-4: Replication Engine and Database on Different Computers**



## Selecting a Network Topology

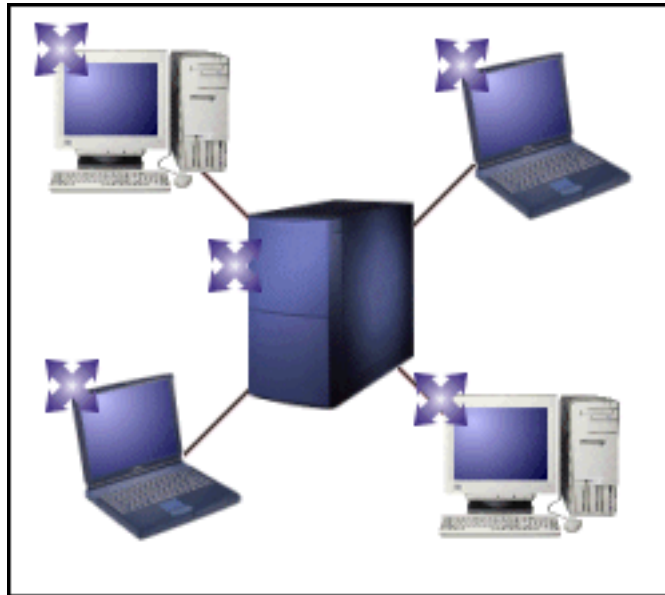
The way in which data is replicated within a Replication Network is dependent on the types of sites that comprise a Replication Network. The following types of sites can be defined within a Replication Network:

- **Complete**  
Used to specify computers that will always be available for replication and contain a complete copy of the database.
- **High Availability**  
Used to specify computers that are always available for replication, but contain a subset of the database. For example, servers or workstations that are always connected to the network.
- **Low Availability**  
Used to specify computers that are not always available for replication and contain a subset of the database. For example, servers or workstations that use a dial-up connection to connect to the network.

**NOTE:** Low availability sites only replicate with high availability or complete sites when the replication session is initiated by the low availability site.

## Hub and Spoke Topology

In this scenario, there is a single high availability or complete site and multiple low availability sites. Replication sessions can only be initiated by the low availability sites.

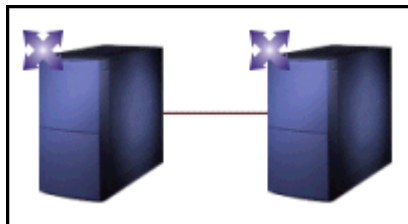


This topology is suitable for providing replication support for mobile users who do not have a fixed IP address.

## Peer to Peer Topology

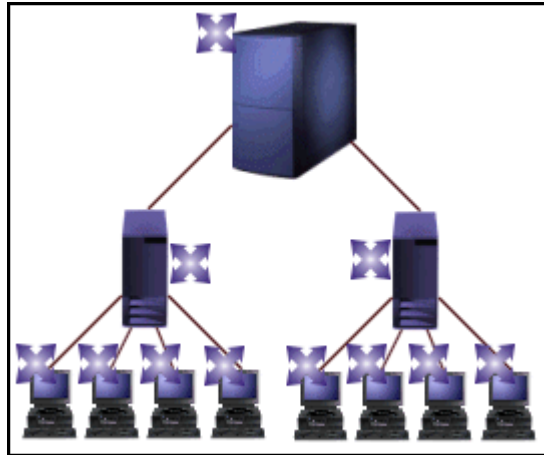
In this scenario, each of the sites that comprise the Replication Network are high availability or complete sites. Replication sessions can be initiated by any site on the network.

This topology is suitable for providing replication support for sites that have fixed IP addresses.



## Multi-Tier Topology

In this scenario, there is a combination of high availability or complete sites and low availability sites. The high availability or complete sites can initiate replication sessions with each other, and low availability sites can initiate replication sessions with any high availability or complete site.



This topology is suitable for providing replication support for both sites that have fixed IP addresses and sites that do not have fixed IP addresses.

## How to Design a Replication Network

To design a Replication Network, perform the following:

1. Install the PeerDirect Distributed Enterprise Software Development Kit.  
For more information, refer to the *PeerDirect Replication Engine SDK Installation Guide*.
2. Prepare the database(s) for replication.  
For more information, refer to the *PeerDirect Replication Engine Getting Started Guide*.
3. Create a data replication plan.  
For more information, refer to the *PeerDirect Replication Engine Getting Started Guide*.
4. Define database replication rules.  
For more information, refer to the *PeerDirect Replication Engine Designer's Guide*.

5. Install and configure the sites that comprise the Replication Network. For more information, refer to the *PDRE Deployment Installation Guide*.
6. Activate the First Site and secondary sites, using `pdactivate`. For more information, refer to the *PeerDirect Replication Engine Administrator's Guide*.

### What is Next

In the next chapter you will find information about installing PDRE Deployments. For more information about setting up your Replication Network, refer to the *PeerDirect Replication Engine Getting Started Guide*.

---

## Installing PDRE Deployment

This chapter describes how to install PDRE Deployment. It includes the following sections:

- [Planning Your Install](#), on page 24.
- [Before You Install](#), on page 24.
- [Installing PDRE Deployment](#), on page 25.
- [Updating a PDRE Deployment Installation](#), on page 33.
- [Uninstalling PDRE Deployment](#), on page 42.
- [What is Next](#), on page 42.

## Planning Your Install

Deploying a Replication Network requires that you install the PDRE Deployment on multiple sites within the Replication Network to enable each of the sites to run the Replication Engine. This is required whether you are installing a two-server failover system, a development or test environment, or a large network of application servers.

Because a PeerDirect Replication Network is made up of individual replication sites that have different requirements based on their position in the network, the first step to planning your installation is to identify the replication requirements for the system you are installing.

The installation instructions in this guide describe how to install PDRE Deployment. For information about designing your Replication Network, refer to the *PeerDirect Replication Engine Getting Started Guide*.

## Before You Install

Before you begin the installation process, perform the following:

1. Verify that you have received the correct PeerDirect software license from PeerDirect Technical Support. There are several types of licenses available from PeerDirect based on the replication server type and vendor-branded database you are deploying. Please refer to [Table 1–1](#), on page [13](#) for a list of supported databases.
2. Review the PeerDirect system requirements in [“Supported Platforms,”](#) on page [12](#) and verify that the system you plan to use meets these requirements.
3. Read the Release Notes, for information about the latest release.
4. Verify that your system hardware and software meet the requirements for the type of PeerDirect Replication Network you have planned. You will find the requirements for PeerDirect replication servers and workstations in [“Supported Platforms,”](#) on page [12](#).
5. If you are planning to replicate an existing database, it is recommended that you back up your current database before you install PDRE Deployment.

6. On **Linux**, if you want more than one person to be able to run the Replication Engine, specify a user name or account to own it and place that user in a group to which you can add other users.
7. On **Linux**, you must install as root user. On **Windows**, you must have administrator privileges to install.
8. On **Red Hat Enterprise Linux version 3.0**, you must first install the Legacy Software Development component. If you are using runlevel 5, select **System Settings>Add/Remove Applications>Development>Legacy Software Development**
9. On **Red Hat Linux 9.0** you must first install `compat-libstdc++-7.3-2.96.118.i386.rpm`. This file is located on Disk 1 of the Red Hat Linux 9.0 CDs.

The PeerDirect license that you are issued from PeerDirect Technical Support provides you with the appropriate permissions to install the replication adapter or ODBC driver for your selected database type.

If you have any questions about your license, contact PeerDirect Technical Support at [support@peerdirect.com](mailto:support@peerdirect.com).

## Installing PDRE Deployment

This section describes how to install PDRE Deployment.

Follow these instructions if you are installing PDRE Deployment for the first time. If you are performing a follow-up installation or upgrading your current installation, see [“Updating a PDRE Deployment Installation,”](#) on page 33.

**NOTE:** The Windows version of the Replication Engine has a dll called `libeay32.dll`. In order for the Replication Engine to function this dll must be first in the environment path.

To install PDRE Deployment:

1. Follow instructions below for your platform:
  - Linux — Log on as a root user. Run `./setup` from the directory where you extracted the PDRE tar file.
  - Windows — Log on to a Windows server or workstation as Administrator. Run `setup.exe` from the directory where you extracted the PDRE zip file.

The Welcome to PeerDirect Software Installation screen displays.

2. Click **Start Installation**.



- In the **Specify the installation location** field, enter the full directory path for the installation directory. The install program will install the PDRE Deployment software in this directory. You can accept the default, type a new path, or click **Browse** to specify an existing directory.

**PDRE** Deployment

VISIT US: [WWW.PEERDIRECT.COM](http://WWW.PEERDIRECT.COM)

**Specify the installation location:**

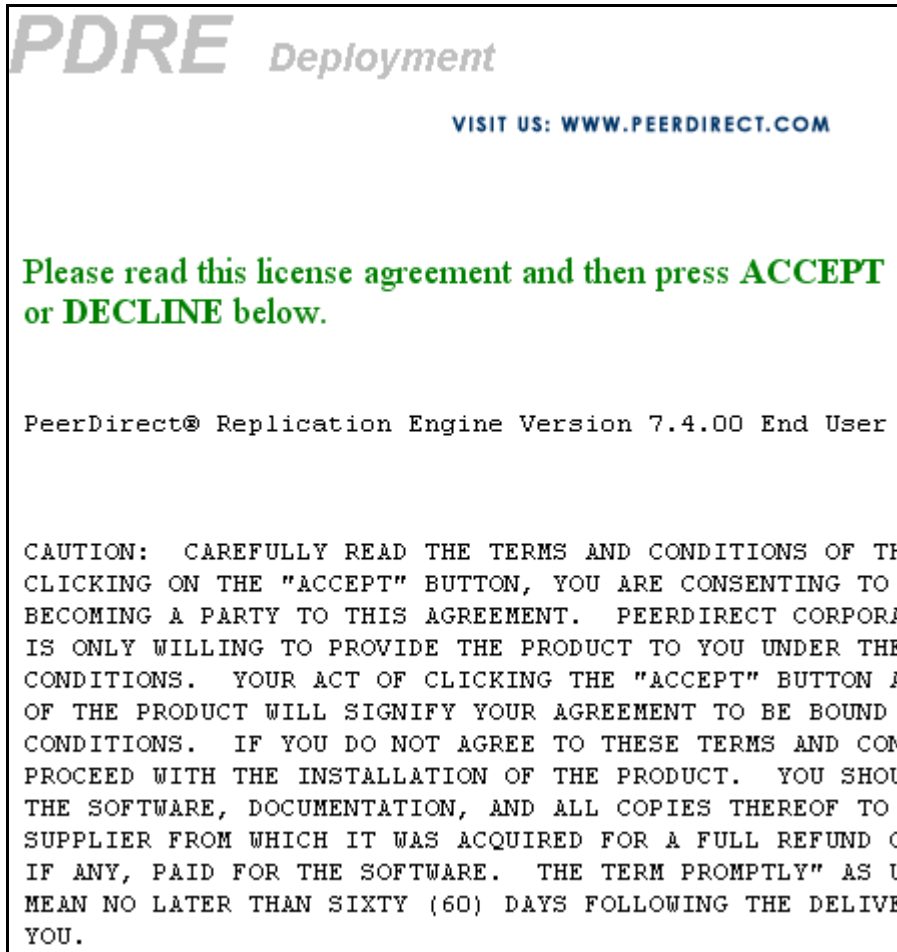
Directory:

The default installation directory paths are

Platform	Run As...	Destination
Red Hat Linux	ROOT	/usr/local/peerdirect
Microsoft Windows	ADMIN PRIVS	C:\Program Files\PeerDirect

- Click **Continue**.  
The License Agreement page appears.

5. Read the PeerDirect license agreement carefully.
  - If you agree to the license, scroll to the bottom of the page and click **Accept** to continue with the installation. The Installation Method page appears.
  - If you do not agree to the license, scroll to the bottom of the page and click **Decline** to exit the Installation program.



6. Select one of the following installation methods:
  - **Quick Installation** — installs all of the Replication Engine components, using the Runtime edition default settings.
  - **Custom Installation** — Enables you to select the components you want to install and enables you to change component settings.



7. If you selected **Quick Installation**, click **Continue**.  
If you selected **Custom Installation**, continue with [Step 9](#).
8. Verify the components that will be installed and do the following:
  - a) On **Linux**, in the **Specify the component account** field, enter a user name. The user name or account you specify will be able to run the daemons for installed components after the installation completes.
  - b) Click **Install** and go to [Step 11](#).

9. On Windows, specify which edition of the PDRE Deployment that you want to install by clicking the appropriate radio button:
  - **Runtime edition** — Installs all of the Replication Engine software components and utilities. This is the standard PDRE Deployment installation.
  - **Client Access edition** — Only installs the Administrator user interface. Select this edition if you are running PeerDirect replication servers on Linux and need to use the Administrator interface to administer it from a Windows computer. In the **Client's Replication Server** field, enter the network name of the server to be administered.

**NOTE:** If you have previously installed PDRE Deployment, the install program recognizes the previous installation and provides you with the option to update it. For more information, see [“Updating a PDRE Deployment Installation,”](#) on page 33.

On Linux,

- In the **User Name** field enter the network name of the server to be administered.
- Check **Create New User** if you want the user name or account created and added to your system.

**PDRE** *Deployment*

VISIT US: [WWW.PEERDIRECT.COM](http://WWW.PEERDIRECT.COM)

**Configure the following Component(s):**

**PeerDirect Replication Engine**

Runtime edition (includes replication engine)

Client Access edition (API only)

Client's Replication Server:

---

**Install**

10. Click **Install**.

11. The install program lists each installed component and shows you the progress of the installation.

```
PDRE Deployment  
  
VISIT US: WWW.PEERDIRECT.COM  
  
Installing to C:\Program Files\PeerDirect  
  
Configuring PeerDirect Installer... [DONE]  
Copying to PDRE staging area... [DONE]  
Configuring PDRE.... [DONE]  
Installing PeerDirect Installer... [DONE]  
Installing PDRE... [DONE]  
Post-Processing PDRE... [DONE]  
Configuring new PDRE site... ...[DONE]  
Completing PDRE post-install... [DONE]  
Starting PDRE... [DONE]  
  
Installation completed, please close the  
browser
```

12. When the install program completes, close the browser window.

## Updating a PDRE Deployment Installation

From time to time, you might want to update your PDRE Deployment installation by installing additional components or upgrading the Replication Engine. To update a PDRE Deployment installation, run the latest install program and specify the location of your existing Replication Engine installation directory. The PDRE Deployment install program recognizes the Replication Engine components you have installed and will update your site using new components you select.

**NOTE:** The Windows version of the Replication Engine as a dll called `libeay32.dll`. In order for the Replication Engine to function this dll must be first in the environment path.

Read the Release Notes before you perform an upgrade.

### To update a PDRE Deployment installation

1. Follow instructions below for your platform:
  - **Linux** — Log on as a root user. Run `./setup` from the directory where you extracted the PDRE tar file.
  - **Windows** — Log on to a Windows server or client computer. Run `setup.exe` from the directory where you extracted the PDRE zip file.

The Welcome to PeerDirect Software Installation screen displays.

2. Click **Start Installation**.



3. Read the PeerDirect license agreement carefully.
  - If you agree to the license, scroll to the bottom of the page and click **Accept** to continue with the installation. The Configure the following Components page appears.
  - If you do not agree to the license, scroll to the bottom of the page and click **Decline** to exit the Installation program.

# PDRE *Deployment*

VISIT US: [WWW.PEERDIRECT.COM](http://WWW.PEERDIRECT.COM)

**Please read this license agreement and then press  
ACCEPT or DECLINE below.**

PeerDirect® Replication Engine Version 7.4.00 End User

CAUTION: CAREFULLY READ THE TERMS AND CONDITIONS OF THE LICENSE AGREEMENT. BY CLICKING ON THE "ACCEPT" BUTTON, YOU ARE CONSENTING TO BECOMING A PARTY TO THIS AGREEMENT. PEERDIRECT CORPORATION IS ONLY WILLING TO PROVIDE THE PRODUCT TO YOU UNDER THESE CONDITIONS. YOUR ACT OF CLICKING THE "ACCEPT" BUTTON OF THE PRODUCT WILL SIGNIFY YOUR AGREEMENT TO BE BOUND BY THESE CONDITIONS. IF YOU DO NOT AGREE TO THESE TERMS AND CONDITIONS, DO NOT PROCEED WITH THE INSTALLATION OF THE PRODUCT. YOU SHOULD RETURN THE SOFTWARE, DOCUMENTATION, AND ALL COPIES THEREOF TO THE SUPPLIER FROM WHICH IT WAS ACQUIRED FOR A FULL REFUND IF ANY, PAID FOR THE SOFTWARE. THE TERM "FULL REFUND" AS USED HEREIN SHALL MEAN NO LATER THAN SIXTY (60) DAYS FOLLOWING THE DELIVERY OF THE PRODUCT TO YOU.

4. The install program recognizes that PDRE Deployment is installed and indicates that the Replication Engine will be upgraded.

# PDRE *Deployment*

VISIT US: [WWW.PEERDIRECT.COM](http://WWW.PEERDIRECT.COM)

## Configure the following Component(s):

### PeerDirect Replication Engine

PDRE version 7.4.00 will be re-installed.

- Runtime edition (includes replication engine)
- Client Access edition (API only)

Client's Replication Server:

---

**Install**

5. Specify the edition of PDRE Deployment you want to upgrade, by clicking the appropriate radio button:
  - **Runtime edition** — Installs all of the Replication Engine software components and utilities. This is the standard PDRE Deployment installation.
  - **Client Access edition** — Only installs the Administrator user interface. Select this edition if you are running the Replication Engine on Linux and want to use the Administrator interface from a Windows computer. In the **Client's Replication server** field, enter the network name of the server to be administered.

6. Click **Install**.

The install program shows you the progress of the installation.



```
PDRE Deployment
VISIT US: WWW.PEERDIRECT.COM

Installing to C:\Program Files\PeerDirect

Stopping PDRE... [DONE]
Configuring PeerDirect
Installer... [DONE]
Copying to PDRE staging area... [DONE]
Configuring PDRE... [DONE]
Backing up old PDRE at C:\Program
Files\PeerDirect\pdre to C:\Program
Files\PeerDirect\pdre_tmp\install_backup...
Removing old PDRE... [DONE]
Completing PDRE Removal... [DONE]
Installing PeerDirect Installer... [DONE]
Installing PDRE... [DONE]
Post-Processing PDRE... [DONE]
Completing PDRE post-install... [DONE]
Starting PDRE... [DONE]

Installation completed, please close the
browser
```

7. When the installation is complete, close the browser window.
8. To include the new 7.4 features, upgrade your replication rules. For more information, see ["Upgrading Replication Rules to 7.4,"](#) on page 39.

## Upgrading Replication Rules to 7.4

Replication Engine version 7.4 and later includes some new Replication Engine system tables. These tables must be added to your database in order to use the new Horizon and Scheduling features. To do this you will need to upgrade your replication rules.

To upgrade the replication rules to include the new 7.4 features:

### Before upgrading your rules:

1. Backup the databases at each of the sites.
2. If you do not have a development database associated with your SDK, then you can create one by dumping the schema out of a production database. To do this, perform the following:
  - a) Restore a database in your development environment, using a backup copy from a production or live database.

**NOTE:** Make sure you include any Replication Engine system and control tables.

- b) Mark the database as inactive by running the following SQL statement:

```
update dcnf set CnfValue='a0a', Stamp=NULL where  
CnfName='PDS_STATE'
```

**In your development environment:**

3. Upgrade your rules to include the new Replication Engine system tables. You can do this using either Replication Designer or **prdc EXPORTSCRIPT**.

**Upgrading Rules using Replication Designer**

To create the new Replication Engine system tables using Replication Designer:

- a) Launch Replication Designer.
- b) From the Database Wizard window, select the name of your development database.
- c) Click **Finish**.  
The PeerDirect Development Studio window appears.
- d) Save the files that Replication Designer created.  
To do this, select **File>Save**.
- e) Verify the replication rules.  
To do this, select **Tools>Verify Rules**.
- f) Prepare the rules for activation.  
To do this, select **Tools>Prepare to Activate**.
- g) Export the replication rules.  
To do this, select **File>Export Rules**.

**Upgrading Rules using prdc**

To create the new Replication Engine system tables using **prdc**, use the following command:

```
prdc PREPARE -odbcn=<odbcuser> -odbcp=<odbcpassword>  
-da=<dbtype> -db=<connstr> -RuleFile=<rule> -ExportRules
```

For more information, refer to the *Replication Engine Designer's Guide*.

4. Upgrade the replication rules on all sites within the development environment, using `pdupgrade`. For example:

```
pdupgrade PDABCDEF00n xPD000EG.ru1
```

For the First Site, ensure you include `-FIRSTSITE`. For example:

```
pdupgrade PDABCDEF00n xPD000EG.ru1 -FIRSTSITE
```

For more information, refer to the *Replication Engine Administrator's Guide*.

5. Test replication within your development environment and repeat steps 4 and 5 as required.

**In your production environment:**

6. Upgrade the replication rules on all sites within the production environment, using `pdupgrade`. For example:

```
pdupgrade PDABCDEF00n xPD000EG.ru1
```

For the First Site, ensure you include `-FIRSTSITE`. For example:

```
pdupgrade PDABCDEF00n xPD000EG.ru1 -FIRSTSITE
```

For more information, refer to the *Replication Engine Administrator's Guide*.

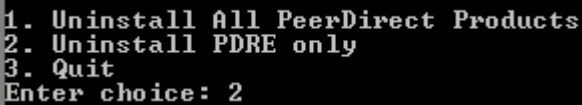
## Uninstalling PDRE Deployment

To uninstall PDRE Deployment:

1. On **Windows**, select **Start>PeerDirect>Uninstall PDRE**.

On **Linux**, log in as root and use the script `<install_dir>/uninstall` where `<install_dir>` is the directory path for your PeerDirect installed components.

The Uninstall PDRE window appears.



```
1. Uninstall All PeerDirect Products
2. Uninstall PDRE only
3. Quit
Enter choice: 2
```

2. In the **Enter Choice** field, enter 2 to uninstall PDRE Deployment.
3. Click **Enter**.  
PDRE Deployment is uninstalled.

## What is Next

You have successfully installed the PDRE Deployment and are now ready to begin the configuration and set-up work described in the *PeerDirect Getting Started Guide*.