



## Progress® DataXtend™ CE

### Highlights

Progress DataXtend CE provides data access and caching via a distributed, persistent data infrastructure for applications with demanding, real-time requirements.

Proven in the most demanding enterprise applications, DataXtend CE supports cross-platform deployment across all major database platforms.

The DataXtend CE product family includes:

- DataXtend CE for C#
- DataXtend CE for C++
- DataXtend CE for Java

### Features at a Glance

- Built-in intelligent cache handles object model and schema constraints, resulting in high performance.
- Continuous Cache Coordination proactively 'pushes' database changes to distributed cache.
- Cache clustering maintains data integrity across applications while providing scalability and high availability.
- Graphical O/R mapping tools simplify and speed model-driven or schema-driven development.
- Runtime binding to database supports all major relational databases and prevents vendor lock-in.

### Data Caching for the Real-Time Enterprise

Progress DataXtend CE (Cache Engine) provides data access and caching via a distributed, persistent data infrastructure for applications with demanding real-time requirements. DataXtend CE delivers extremely fast, object-oriented access to relational data for C#, C++, or Java® applications, and offers the flexibility of either model-driven or schema-driven development support.

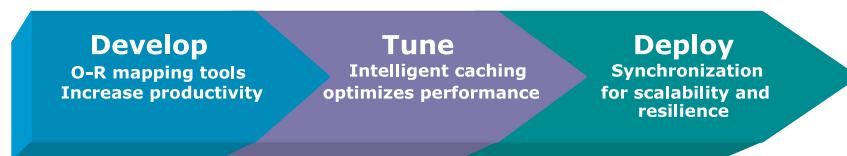
In contrast to commodity mapping or caching tools, DataXtend CE's integrated data services meets requirements for all stages of the application lifecycle—from design and development through performance tuning and deployment, even in environments with non-DataXtend CE applications.

### Improve Application Performance

While relational databases can be highly optimized and efficient, they simply are not designed to handle the increased volume and data access patterns of modern enterprise systems. Caching in the application tier is the best way to reduce the load on the relational database, removing performance bottlenecks and allowing the database to more efficiently handle operations that actually modify the data set.

DataXtend CE's extensible data access platform is optimized for demanding applications exploiting new architectural patterns such as Service Oriented Architectures (SOAs), especially those with complex data models and/or high request rates.

### Full Lifecycle Approach



Most data access products address the requirements of just one phase of the project lifecycle, such as O/R mapping for development, caching for tuning, or cache clustering for deployment. In contrast, DataXtend CE offers a flexible, full-lifecycle, and cross-platform approach that meets requirements from development through deployment.

### Continuous Cache Coordination

Object-oriented applications built on the advanced caching capabilities of DataXtend CE can operate in complex environments where other applications making use of traditional SQL access methods are also modifying the data. Continuous Cache Coordination, a unique feature in DataXtend CE, ensures that updates made by these other enterprise applications are reflected in the object cache in a timely and consistent manner by proactively 'pushing' changes made to the database out to the distributed cache.

## Cache Clustering

Deployment features within DataXtend CE ensure that performance and scalability achieved during preproduction continues through rollout—in the data center and beyond. DataXtend CE takes full advantage of existing clustering features available in Java and .NET development environments, and complements them with stateful cache synchronization, guaranteeing fresh data for all users and supporting load balancing and failover implementations.

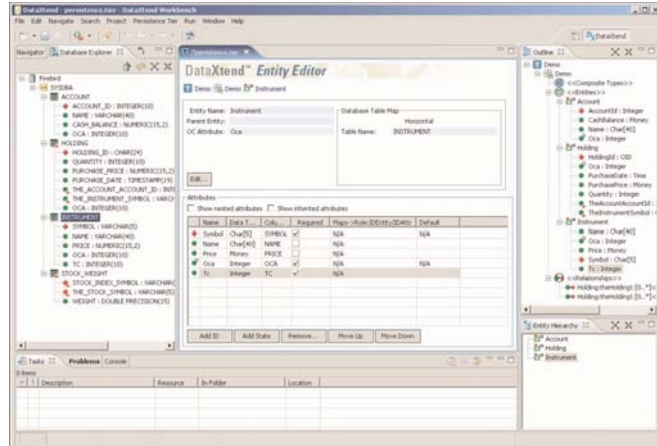


Figure 1: DataXtend CE offers outstanding graphical tools for O/R mapping and development

## Extensive Deployment Success

Over 100 companies in the Forbes Global 2000 have achieved breakthrough application performance and developer productivity—while dramatically cutting infrastructure and operating costs—including customers such as Adobe, Air France, Citigroup, Eurocontrol, FedEx, Motorola, NetJets, and Reuters.

### Operating Platforms

Development:

- Windows® 2000, XP, 2003

Deployment:

- Windows® 2000, XP, 2003
- AIX®
- Solaris®
- HP-UX®
- Mac OS®
- Linux

### Supported Databases

DataXtend CE supports all major relational database products, including:

- Oracle
- SQL Server
- DB2
- Informix
- Sybase
- MySQL

#### Worldwide and North American Headquarters

Progress Real Time Division, 14 Oak Park, Bedford, MA 01730 USA Tel: +1 781 280 4000

#### UK and Northern Ireland

Progress Real Time Division, 210 Bath Road, Slough, Berkshire, SL1 3XE England Tel: +44 1753 216 300

#### Central Europe

Progress Real Time Division, Konrad-Adenauer-Str. 13, 50996 Köln, Germany Tel: +49 6171 981 127

#### France

Progress Real Time Division, 3 Place de Saverne, Les Renardières B, 92901 Paris la Défense Tel: +33 1 41 16 16 56

[www.progress.com/realtime](http://www.progress.com/realtime)

**PROGRESS**  
SOFTWARE

[www.progress.com](http://www.progress.com)

Specifications subject to change without notice.

© 2006 Progress Software Corporation.

All Rights Reserved.

Progress and DataXtend are trademarks or registered trademarks of Progress Software Corporation, or any of its affiliates or subsidiaries, in the U.S. and other countries. Java and all Java-based marks are trademarks or registered trademarks of Sun Microsystems, Inc. in the U.S. and other countries. Any other trademarks or service marks contained herein are the property of their respective owners. Specifications subject to change without notice. Visit [www.progress.com/realtime](http://www.progress.com/realtime) for more information.