

Progress WebSpeed is the best Integrated Development Environment for building and deploying highly scalable, e-business applications that process large volumes of transactions.

### HIGHLIGHTS

WebSpeed provides a complete, highly productive Integrated Development Environment for building and deploying web applications.

High throughput, sub-second transaction times, and dynamic load balancing enable unsurpassed scalability to handle thousands of simultaneous users.

WebSpeed Transaction Server optimizes transaction processing for proven reliability and application/data integrity.

### FEATURES AT A GLANCE

- XML support for business-to-business solutions
- Browser-based Code Editor allows you to create and modify your applications remotely
- Dynamic load balancing ensures high availability of transaction processing
- Color Editing Tools improve developer productivity over 20%

Progress® WebSpeed® is a proven solution for quickly building and deploying business applications across corporate intranets, extranets, and the Internet. With Progress WebSpeed, business applications that require powerful database connectivity and state management – such as supply chain management, order entry, customer service, and inventory control – can keep pace with the rapidly evolving world of multi-tier, multi-platform Web application development.

Progress WebSpeed consists of two principal modules:

- WebSpeed Workshop, an integrated suite of development tools for building ITP (Internet Transaction Processing) applications
- WebSpeed Transaction Server, a robust platform for deploying ITP applications with high scalability and rapid response rates.

In the fast-paced world of the Internet, Web application development just got a little faster.

### A Proven Toolkit for Building Web Applications

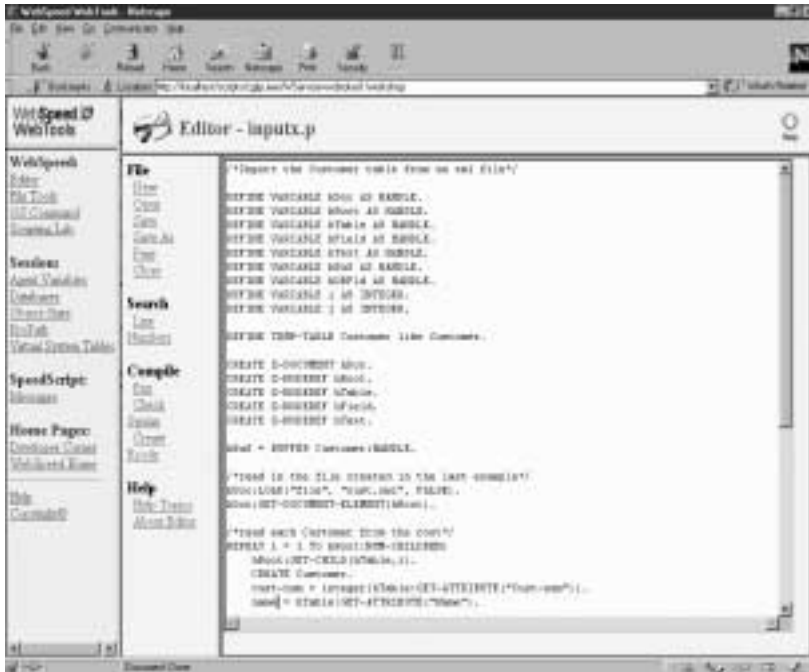
WebSpeed Workshop is an Integrated Development Environment that lets you perform many functions via a browser, such as code editing, file management and database reference.

WebSpeed Workshop provides a robust set of WebTools, including SpeedScript, a high-level, server-side

4GL compiled scripting language, that enables you to quickly prototype, develop, and maintain re-usable application business logic, super-procedures, and dynamic queries/buffers.

WebSpeed Workshop and SpeedScript support Progress' Application Development Methodology (ADM), a component development paradigm that enables you to develop and share business logic across Web and other distributed applications. With the ADM's SmartObjects®, you can define and reuse business logic components in Web and client/server applications, offering code inheritance, encapsulation and other object-oriented development benefits.

WebTools for compiling and testing applications include the Scripting Lab and the WebSpeed Development Server. With the Scripting Lab, you can test code fragments quickly before adding them to your WebSpeed application. This will increase your productivity and help you create feature-rich user interfaces and browser-side validation routines using JavaScript, VBScript, and Java™ applets. The WebSpeed Development Server lets you compile and run applications on an ISAPI-, NSAPI-, or CGI 1.1-compliant Web server.



WebSpeed Workshop lets you perform many functions via a browser, such as code editing, file management and database reference.

### A Totally Integrated Development Environment

WebSpeed Workshop brings you all the benefits of the flexible Progress programming environment, where you can structure development based on your project's requirements.

You can develop and deploy Internet applications using XML, HTML, DHTML, JavaScript, Java; by embedding SpeedScript directly into your HTML pages; or using HTML mapping to bind HTML files to business logic.

Native database support includes access to Progress® RDBMS, as well as Oracle®, DB2®/400, and Microsoft SQL/Server® through Progress DataServers.

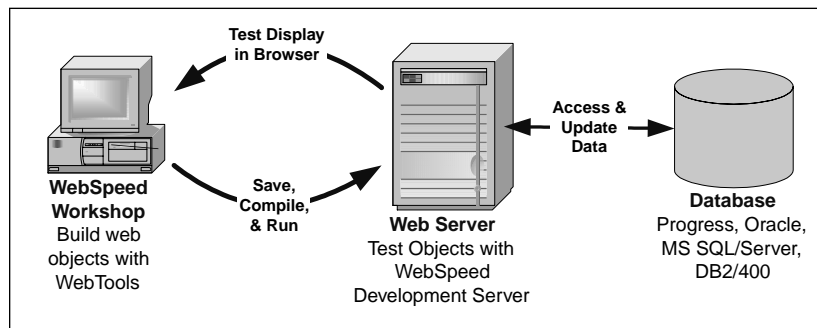
Wizards and templates can be used to create professional, multi-page ITP applications with little or no coding, significantly cutting development time while preserving the ability to customize your application.

The WebSpeed IDE also includes:

- Progress Data Administration tools to define database definitions, application defaults and business rules.
- Progress Personal RDBMS with 4GL and SQL-92 support for development and third party integration.
- Integration with RoundTable products for source code management and team collaboration.

### Color Editor Maximizes Developer Productivity

The Color Editing Tools in the WebSpeed Workshop increase developer productivity by over 20%. Color Coding is a powerful feature that displays various types of 4GL syntax and SpeedScript in distinct user-definable colors, and it supports other programming and scripting languages such as HTML, C, C++, Perl, JavaScript and Java.



Quickly develop, compile, and test applications with WebSpeed Workshop.

Syntax Expansion and Alias Expansion save you keystrokes by automatically generating the rest of a 4GL keyword, statement, or block. Syntax Indenting and Smart Paste help you keep your code readable.

These Color Editing Tools make it easier to write, read and maintain code, and enable you to build "best practices" standards for your Progress applications. All of these timesaving features are proven to enhance productivity.

### XML Speeds Business-to-Business Data Exchange

XML (eXtensible Markup Language) is supported directly in WebSpeed's SpeedScript (4GL) language, allowing you to exchange data between Progress supported data sources and XML documents.

The standard for exchanging data between disparate applications, XML is vital for business-to-business e-commerce. XML is a markup language like HTML. However, unlike HTML, XML describes document content in terms of the data without regard for how it is to be displayed.

With our industry standard XML parser, developers can use SpeedScript to create programs that send and receive XML documents to/from other XML-enabled Web applications using DOM (Document Object Model) and SAX (Simple API for XML) interfaces.

### Lets Applications Scale Up With the Transaction Server

The WebSpeed Transaction Server provides an optimized transaction-processing environment to help you achieve high transaction volumes and rapid responses for Web applications. With high throughput, sub-second transaction times, and dynamic load balancing, you get unsurpassed scalability to handle thousands of simultaneous users.

Record locking, transaction rollback, and two-phase commit allow WebSpeed to safeguard application and data integrity – even if transactions are interrupted – and guarantee the integrity of transactions that span multiple databases.

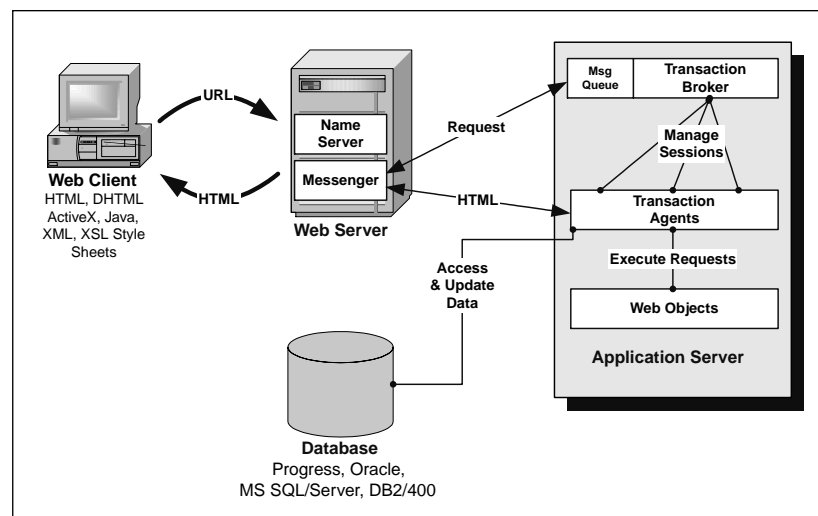
Dynamic load balancing ensures high availability of transaction processing resources in a distributed, multi-tier environment. And, WebSpeed Transaction Server allows developers to leverage common business logic for client/server and Web applications. Flexible state management offers full

support for extended database queries and updates using stateless, state-aware, or state-persistent Web objects.

WebSpeed Transaction Server also features:

- Ability to service both XML- and HTML-based Web applications
- Message queuing to dramatically improve agent availability
- Efficient handling of peak and off-peak loads by dynamically starting WebSpeed Agents
- Enhanced deployment administration and configuration with Java-based Progress Explorer
- NameServer for location transparency, load balancing and redundancy

And, WebSpeed's open architecture gives you the freedom to integrate your choice of security solutions, including firewall, authentication, authorization, and encryption technologies.



The WebSpeed Transaction Server provides high throughput, sub-second transaction times, dynamic load balancing, and unsurpassed scalability to handle thousands of simultaneous users.

## System Requirements

### *WebSpeed Workshop AppBuilder®*

- Windows 95/98/NT 4.0/2000,  
Citrix MetaFrame

### *WebSpeed Development Server*

- Windows NT 4.0/2000/XP on Intel®  
platforms; IBM AIX®;  
HP-UX®; Sun® Solaris™; SCO  
UnixWare; Red Hat Linux; Compaq  
Tru64 Unix; Citrix MetaFrame;  
Caldera Open Linux; SUSE Linux
- ISAPI-, NSAPI-, or CGI 1.1-  
compliant Web server
- 96 MB RAM (128 MB  
recommended)
- 345MB disk space
- CD-ROM drive
- Microsoft Internet Explorer™ 4.x,5.x  
Netscape Navigator™ 4.x,5.x
- Authoring tool that supports HTML  
3.2 and JavaScript (recommended)
- VGA or higher resolution video  
adapter running at 800x600

### *WebSpeed Transaction Server*

- Windows NT 4.0/2000/XP on Intel®  
platforms; IBM AIX®, HP-UX®;  
Sun® Solaris™, SCO UnixWare,  
RedHat Linux, Compaq Tru64 Unix;  
Citrix MetaFrame; Caldera Open  
Linux; SUSE Linux
- ISAPI-, NSAPI-, or CGI 1.1-  
compliant Web server
- 128 MB RAM (256 MB  
recommended)
- 226 MB disk space
- CD-ROM drive

**For more information about Progress  
WebSpeed, please visit our Web site  
at [www.progress.com](http://www.progress.com) or contact the  
Progress Software office nearest you.**

#### **Corporate Headquarters**

Progress Software Corporation, 14 Oak Park, Bedford, MA 01730 USA Tel: 781 280 4000 Fax: 781 280 4095

#### **Europe/Middle East/Africa Headquarters**

Progress Software Europe B.V. Schorpioenstraat 67 3067 GG Rotterdam, The Netherlands Tel: 31 10 286 5700 Fax: 31 10 286 5777

#### **Latin American Headquarters**

Progress Software Corporation, 2255 Glades Road, One Boca Place, Suite 300 E, Boca Raton, FL 33431 USA Tel: 561 998 2244 Fax: 561 998 1573

#### **Asia/Pacific Headquarters**

Progress Software Pty. Ltd., 1911 Malvern Road, Malvern East, 3145, Australia Tel: 61 39 885 0544 Fax: 61 39 885 9473

Progress, ProVision, WebSpeed, Progress Results, AppServer, AppBuilder and SmartObjects are registered trademarks or trademarks of Progress Software Corporation. All other trademarks, marked and not marked, are the property of their respective owners.

**PROGRESS  
SOFTWARE**

[www.progress.com](http://www.progress.com)

Specifications subject to change without notice.

© 2000 Progress Software Corporation.

All rights reserved.

WBSP/BC/0300-OSS

3640



0000067248