

# PROGRESS<sup>®</sup> SAVVION<sup>®</sup> PROCESS MODELER

## PROGRESS<sup>®</sup> SAVVION<sup>®</sup> PROCESS MODELER: OVERVIEW

A key component of the Progress<sup>®</sup> Savvion<sup>®</sup> Business Process Management (BPM) suite, Progress<sup>®</sup> Savvion<sup>®</sup> Process Modeler puts a high-quality, easy-to-use business process designer at the fingertips of business people. For the first time, everyone in your business can participate in documenting business processes and improvement ideas.

Because models created in Progress Savvion Process Modeler seamlessly and transparently interchange with the Progress<sup>®</sup> Savvion<sup>®</sup> BPM Studio development environment, you can support collaborative design between business analysts and IT technologists. Upon completion, the models created by business users are archived and serve as the specification for the working application, eliminating any requirements getting “lost in translation” between business and IT. The resulting process designs can be tested and simulated by the analyst prior to deployment, for even greater control and continual improvement.

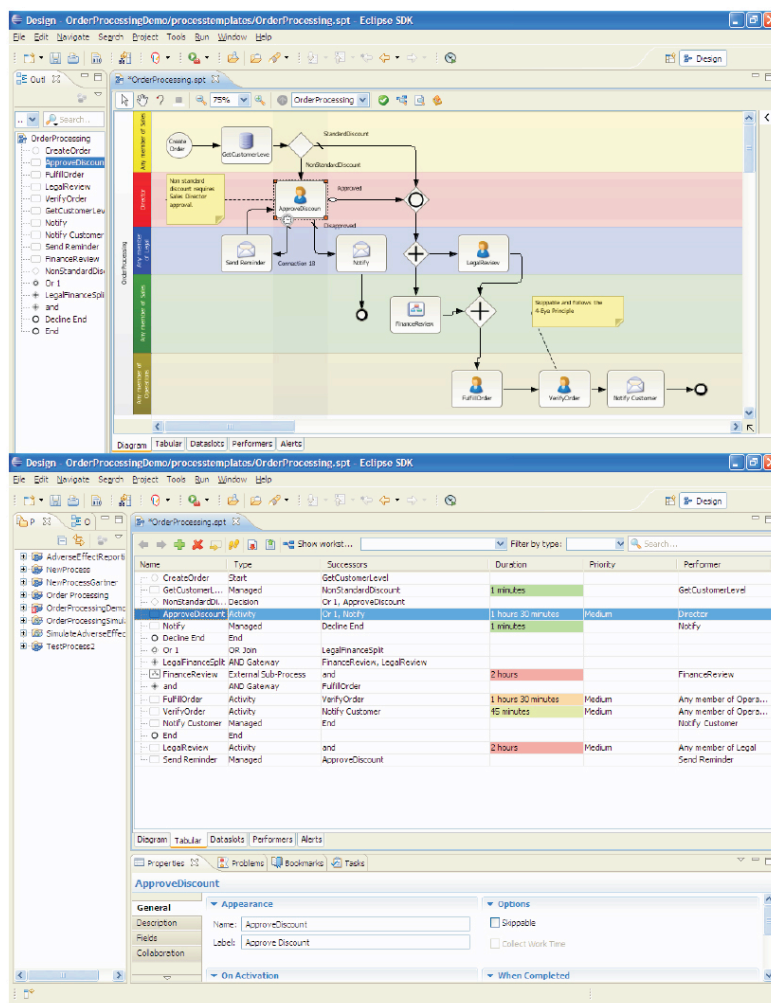
Since the Progress Savvion Process Modeler is a standalone PC application that can easily be taken on a laptop to business planning meetings with process owners, it provides a real convenience that saves time and money. Afterwards, the process models can be saved in the Progress<sup>®</sup> Savvion<sup>®</sup> Process Asset Manager

## KEY FEATURES

*Progress<sup>®</sup> Savvion<sup>®</sup> Process Modeler is an easy-to-use business application to help people articulate, simulate and document business processes. It's the best way for business people to communicate how current business processes work today and the only application that enables business people to test their improvement ideas without burdening IT specialists. Progress Savvion Process Modeler brings more business people to the table in your BPM initiatives.*

repository for further development and sharing. Progress Savvion Process Modeler enables you to:

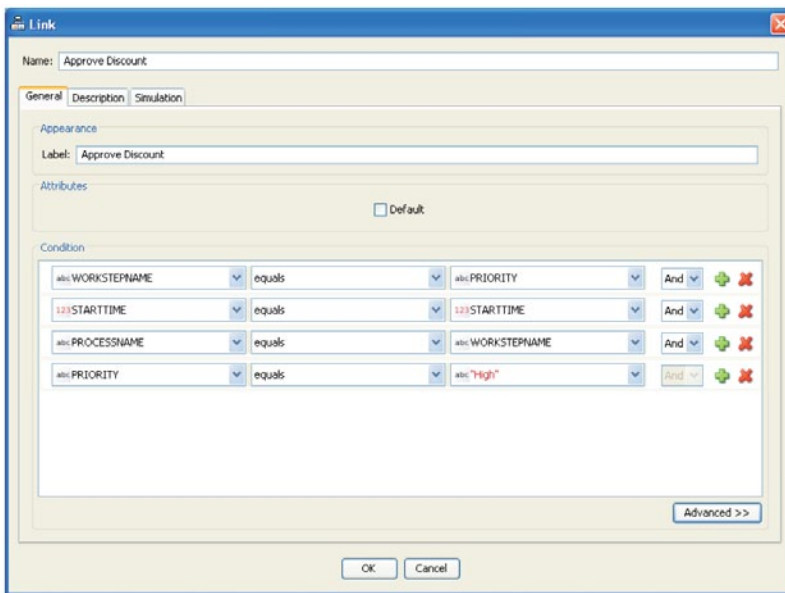
- > Model and simulate process designs before implementing them in a production environment, reducing costly and time-consuming test cycles
- > Automatically document processes to maintain and support compliance with new industry and government regulations
- > Store processes in a central repository for reliable access to best practices and reuse of common process elements, saving time and eliminating duplicate efforts
- > Continually optimize business-critical processes to incrementally improve operational efficiency



- > A built-in Expression Builder provides people with an easy way to describe their decision flow logic. This logic can be extended with scripting by technical experts if more complex logic is required.

## PROCESS MODELING

The Progress Savvion Process Modeler patent-pending Tabular View process definition provides a unique and easy-to-use way for business users to define their process. Process diagrams are automatically generated from the Tabular View. Progress Savvion Process Modeler also provides a graphical desktop design environment that is intuitive and simple to learn. Not only can you create a visual representation of your process, but you can also generate process-flow diagrams that contain instructions for handling exceptions, sub-processes, and events.



*A built-in Expression Builder provides people with an easy way to describe their decision flow logic*

For business people who are interested in sharing their high-level ideas, Progress Savvion Process Modeler supports the concept of abstract models. These non-executable models make it easier for high-level business people to communicate their ideas to people responsible for functional details of company strategies.

Progress Savvion Process Modeler also supports a new usage scenario, project-oriented processes, which brings together the value of project portfolio management and BPM. It allows you to define phases and milestones and

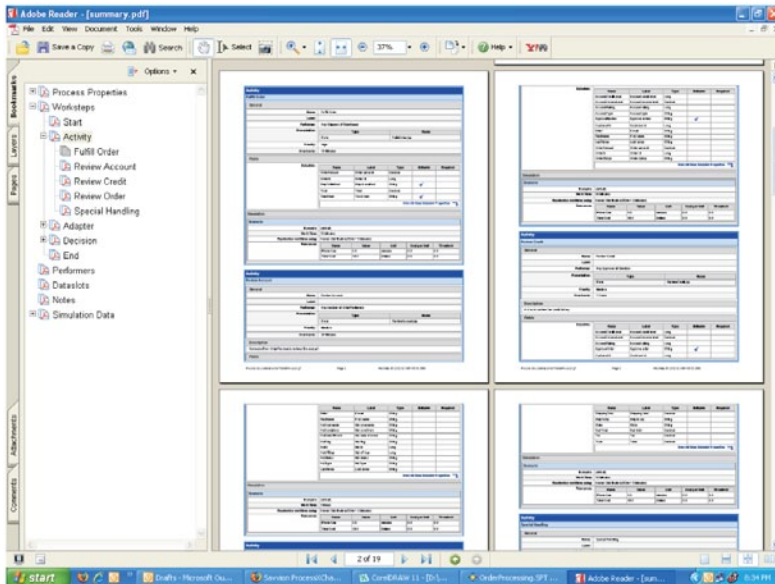
perform path and timeline analysis. Additionally, you can easily import your projects from MS Project and convert them into process models.

Progress Savvion models are based upon the industry-standard notation for representing process flow diagrams: Business Process Modeling and Notation (BPMN). Throughout the modeling phase, Progress Savvion Process Modeler will keep track of the state and logic of your process and can verify that rules and parameters are being obeyed, so you can be assured you are building logical, executable process flows.

## PROCESS SIMULATION

The simulation environment in Progress Savvion Process Modeler enables business users to test process improvement ideas before committing to a full production deployment of a new solution. The robust simulation capabilities allow objective-based simulation, multi-process and multi-scenario simulation and comparison. The simulation allows you to take into account human and system performers, consumable and non-consumable resources and business calendars for more comprehensive analysis.

An extensive collection of reports graphically depicts resource usage, highlighting process bottlenecks and unanticipated resource usage.

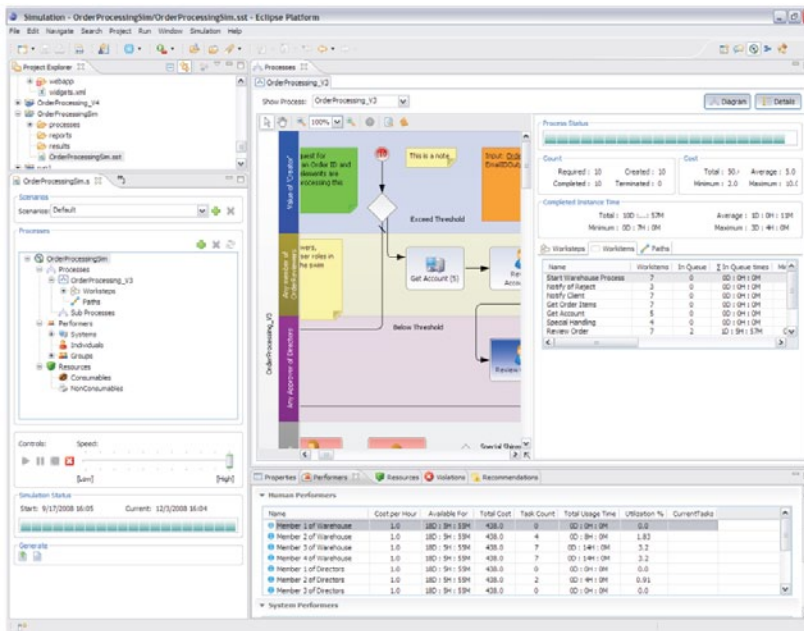


## DOCUMENTED COMPLIANCE

During modeling and simulation, Progress Savvion BPM software creates auditable documentation of your process, including a detailed description of the process design. Your business may need to review and update its processes in response to government legislation such as Sarbanes Oxley or the Health Insurance Portability and Accountability Act (HIPAA).

Complying with these or other regulations may require your organization to significantly revamp existing processes or put new measures into place. Keeping detailed records of the process evolution helps streamline deployment of compliant IT systems and minimize disruptions.

## OPTIMIZATION



As business conditions change, so will your business processes. Progress Savvion Process Modeler was designed to facilitate rapid idea generation and clean communication between business people and those more technically inclined. It is a fully integrated part of the Progress Savvion BPM suite and, as such, shares the data model and interoperability with the other core components of the system.

---

## SAVVION BPM

Progress Savvion Process Modeler is part of Progress Savvion BPM suite, the first BPM system in the industry to deliver true process lifecycle management, the complete end-to-end delivery of business processes from modeling to deployment to management to process improvement. Unique in the industry, the Progress Savvion enhanced BPM system puts role-specific tools directly into the hands of those closest to the process at the appropriate phase. These include a robust modeling and simulation system for business analysts; a collaborative process design, business rule and event management and integration system for IT developers; and business performance scorecard, business intelligence analytics and process improvement tools for business managers.

This tight integration of all phases of the process lifecycle, coupled with Progress Savvion and partner-developed industry process templates, enable Progress Savvion customers to quickly move from process discovery to production in less than 90 days while returning 200%-to-300% ROI.

## PROGRESS SAVVION PROCESS MODELER TECHNICAL MATRIX

### *OPERATING SYSTEMS*

- > Windows 2000/Vista/XP Professional SP2

### *JAVA STANDARD:*

- > JDK 1.5/1.6
- > J2EE 1.3/1.4

## WHY PROGRESS SAVVION?

As the BPM trailblazer, Progress Savvion moves enterprises beyond ordinary BPM with proven business-critical software, solutions, and services that make organizations more competitive and cost-efficient.

---

Progress Savvion is an all-in-one, streamlined BPM solution for continuous business process improvement enabling business users and IT to collaboratively deploy process improvement initiatives in as few as 30 days while delivering a return on investment as high as 300 percent. We provide business users and business analysts with easy-to-use, yet very powerful continuous improvement tools. Line-of-business managers can now responsively manage their operations, receiving continuous feedback on performance and recommended corrective actions to optimize their operations.

Progress Savvion BPM also provides the unique capability of establishing a foundation for process optimization with an integrated path to operational responsiveness through the Progress® Responsive Process Management™ (RPM) suite. Leveraging leading Progress business event processing (BEP) and business rules management (BRM) capabilities, enterprises can further automate their processes through smarter decision management. Together, Progress RPM™ takes visibility and control beyond BPM to deliver an intelligent business operation (IBO) solution that allows organizations to sense and respond to changing conditions as they occur. The enhanced capabilities of Progress RPM mean that businesses can now analyze *what is about to happen* to proactively capitalize on opportunities, driving enhanced profitability and reducing risk.

---

## PROGRESS SOFTWARE

Progress Software Corporation (NASDAQ: PRGS) is a global software company that enables enterprises to be operationally responsive to changing conditions and customer interactions as they occur. Our goal is to enable our customers to capitalize on new opportunities, drive greater efficiencies, and reduce risk. Progress offers a comprehensive portfolio of best-in-class infrastructure software spanning event-driven visibility and real-time response, open integration, data access and integration, and application development and management—all supporting on-premises and SaaS/cloud deployments. Progress maximizes the benefits of operational responsiveness while minimizing IT complexity and total cost of ownership.

## WORLDWIDE HEADQUARTERS

Progress Software Corporation, 14 Oak Park, Bedford, MA 01730 USA  
Tel: +1 781 280-4000 Fax: +1 781 280-4095 On the Web at: [www.progress.com](http://www.progress.com)

Find us on  [facebook.com/progresssw](https://facebook.com/progresssw)  [twitter.com/progresssw](https://twitter.com/progresssw)  [youtube.com/progresssw](https://youtube.com/progresssw)

For regional international office locations and contact information, please refer to the Web page below:  
[www.progress.com/worldwide](http://www.progress.com/worldwide)

Progress, Responsive Process Management, Savvion, Savvion BusinessManager, and Business Making Progress are trademarks or registered trademarks of Progress Software Corporation or one of its affiliates or subsidiaries in the U.S. and other countries. Any other marks contained herein may be trademarks of their respective owners. Specifications subject to change without notice.

© 2009, 2010-2012 Progress Software Corporation and/or its subsidiaries or affiliates. All rights reserved.

Rev. 02/12 | 120123-0119

