

PROGRESS[®] SAVVION[®] PROCESS ASSET MANAGER

PROGRESS[®] SAVVION[®] PROCESS ASSET MANAGER: OVERVIEW

Progress[®] Savvion[®] Process Asset Manager extends the core capabilities of Progress[®] Savvion[®] Process Modeler by enabling teams of business analysts to collaborate on process modeling projects using a powerful process repository. The repository stores, manages and version-controls libraries of process models, process simulations and process documentation, encouraging enterprise-wide reuse. Progress Savvion Process Modeler facilitates “round-trip engineering,” allowing metrics to be defined in the modeling stage. Once the process is actively deployed, real-time metric data can be compared to original simulations, making it easier to optimize the process by pointing out bottlenecks and areas for improvement.

Progress Savvion Process Asset Manager delivers a complete integrated solution for teams of business analysts to manage and reuse a library of process models and associated components such as adapters, dataslots and application forms. Such reuse considerably reduces application design and development time and effort and helps enforce enterprise standards and best practices.

HIGHLIGHTS

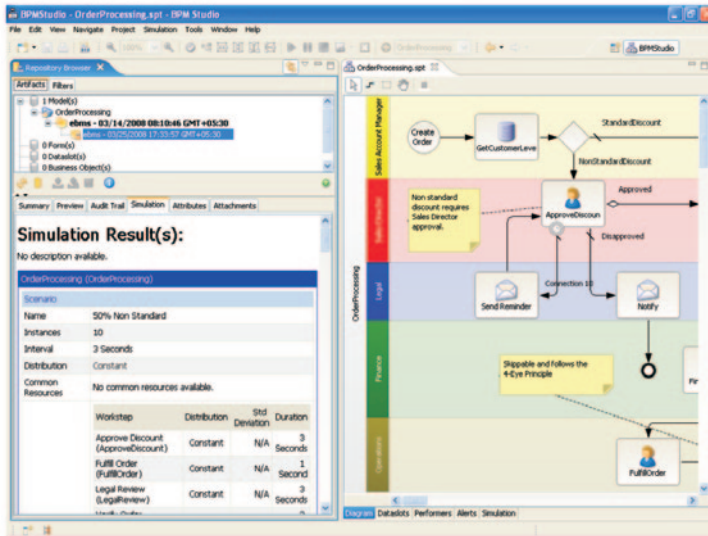
Progress[®] Savvion[®] Process Asset Manager enables you to store, manage, and reuse fully auditable process solution components for better collaboration and best-practice sharing.

The models are stored in a powerful process repository, the Progress Savvion Process Asset Manager Server, which provides complete access control over the library. Progress Savvion Process Asset Manager manages versioning of the process models and the simulation data generated by the models, assuring information integrity. This version control system also provides a detailed audit trail delivering a complete documented history of each version of the model, crucial for Sarbanes Oxley and industry regulatory compliance. With this level of granular control, you can develop and maintain libraries in a service-oriented architecture (SOA), guaranteeing standardization and conformity of process execution across the enterprise. Users can also specify process attributes and categories (such as “HR processes” or “Loan Origination processes”) and then easily search for and find such processes and associated components. In addition, all related documentation can be added and stored along with this process in the repository.

When models stored in Progress Savvion Process Asset Manager are selected to be deployed as production applications, they are accessed by Progress® Savvion® BPM Studio, the Progress Savvion IT development environment, seamlessly enabling collaborative design between business analysts and IT technologists. Not all process models are destined to become production applications, but rather may exist simply to document a process. In other cases, process models can be developed and made ready in the event that they are needed, such as in disaster recovery or emergency response processes. Progress Savvion Process Asset Manager is ideally suited for use by enterprise business process teams at the corporate or division level, bringing together the business analyst and IT team members around a common methodology that begins with the business owner and his or her process models

PROCESS ASSET MANAGEMENT

While process improvement is about managing change, process lifecycle management is about managing the history of change. Progress Savvion Process Asset Manager provides a complete and detailed audit trail of all changes to the models in the repository as well as access control to the repository.



This feature stores all of the changes made to a process, as well as process simulation data, throughout the lifecycle of a process, enabling business owners to audit changes made to a process as optimization and change occur. At any time, the process owner can pick a point in the past history of the process and compare the properties of the current version with the historic version. This becomes especially important as organizations seek compliance with regulatory standards such as Sarbanes Oxley.

Every time you build a new process model, you're effectively capturing corporate intellectual property in a centralized repository of process designs. The value of this repository is twofold. You have reliable access to policies and procedures currently in use, and you have version control for those processes undergoing development.

Effectively, this central repository serves as a knowledge base for your ongoing operations. Process documentation can be enormously useful when consolidating or re-engineering "composite" processes that span multiple enterprise systems.

A central repository will also assist you in evaluating a range of processes to determine company-wide best practices for process design. You can reuse process elements, speeding development for new processes while maintaining consistency with rules and logic already in place. Recycling process logic enables your organization to effectively, efficiently and consistently support ongoing business strategies.

PROCESS OPTIMIZATION

As business conditions change, so should your business processes. Progress Savvion Process Asset Manager was designed to let you change your business processes quickly and simply. Because rules and logic are not hardcoded into applications, you can readily make changes and track process versions in the centralized repository. Business processes can touch every part of your organization, so your BPM solution must be flexible to adapt to unexpected changes. Complying with Sarbanes Oxley or other regulations may require your organization to significantly revamp existing processes or put new measures into place. Keeping detailed records of the evolution of your processes helps streamline deployment of compliant IT systems and minimize disruptions.

PROGRESS® SAVVION® BPM SUITE

Progress Savvion Process Asset Manager is part of the Progress® Savvion® Business Process Management (BPM) product suite. Progress Savvion BPM is the first BPM system in the industry to deliver true process lifecycle management, the complete end-to-end delivery of business processes from modeling to deployment to management to process improvement. Unique in the industry, the Progress Savvion-enhanced BPM system puts role-specific tools directly into the hands of those closest to the process at the appropriate phase. It provides a robust modeling and simulation system for business analysts; a collaborative process design, business rule and event management and integration system for IT developers; and a business performance scorecard, business intelligence analytics, and process improvement tools for business managers.

This tight integration of all phases of the process lifecycle, coupled with Progress Savvion and partner-developed industry process templates, enables Progress Savvion customers to quickly move from process discovery to production in less than 90 days while returning 200%-to-300% ROI.

PROCESS ASSET MANAGER

Operating Systems

Microsoft Windows Server 2003
Standard/Enterprise R2
Sun Solaris 9/10 (SPARC)

Application Servers

Pramati 6.0 SP1
WebLogic 9.2 MP3/10 MP3
WebSphere 6.1
Tomcat 6.0 (bundled)

Databases

Oracle 10g/11g
Enterprise Edition
Microsoft SQL Server 2005

LDAP

Microsoft Active directory
Sun Java System Directory
Server 5.2

Java Standard

JDK 1.5/1.6
J2EE 1.3/1.4

WHY PROGRESS SAVVION?

As the BPM trailblazer, Progress Savvion moves enterprises beyond ordinary BPM with proven business-critical software, solutions, and services that make organizations more competitive and cost-efficient.

Progress Savvion is an all-in-one, streamlined BPM solution for continuous business process improvement enabling business users and IT to collaboratively deploy process improvement initiatives in as few as 30 days while delivering a return on investment as high as 300 percent. We provide business users and business analysts with easy-to-use, yet very powerful continuous improvement tools. Line-of-business managers can now responsively manage their operations, receiving continuous feedback on performance and recommended corrective actions to optimize their operations.

Progress Savvion BPM also provides the unique capability of establishing a foundation for process optimization with an integrated path to operational responsiveness through the Progress® Responsive Process Management™ (RPM) suite. Leveraging leading Progress business event processing (BEP) and business rules management (BRM) capabilities, enterprises can further automate their processes through smarter decision management. Together, Progress RPM™ takes visibility and control beyond BPM to deliver an intelligent business operation (IBO) solution that allows organizations to sense and respond to changing conditions as they occur. The enhanced capabilities of Progress RPM mean that businesses can now analyze ***what is about to happen*** to proactively capitalize on opportunities, driving enhanced profitability and reducing risk

KEY FEATURE	BENEFIT
Business analyst team collaboration	Business analysts work as collaborative teams to articulate, simulate, and document processes.
Process asset repository	A central repository coordinates the storage and lifecycle management of department, division, and enterprise processes. Borrowing from the best attributes of IT-oriented source code control systems, the Savvion Process Asset Manager Server delivers these features to business people without extensive IT overhead.
Process documentation	A detailed description of each process, including multi-scenario simulation results, is accessible from a central location and can be used to determine compliance with industry regulations.
Process lifecycle management	The Savvion Process Asset Manager provides complete access and version control of models, simulation, and documentation.
Extensible metadata model	Business users can describe their processes in detail using the extensive attributes framework for process metadata.
Detailed process search	People can search for and browse process models in the repository. The search mechanism is deeply integrated to the process metadata model, which makes it easy for people to find models by category, application, business function, or designer.

PROGRESS SOFTWARE

Progress Software Corporation (NASDAQ: PRGS) is a global software company that enables enterprises to be operationally responsive to changing conditions and customer interactions as they occur. Our goal is to enable our customers to capitalize on new opportunities, drive greater efficiencies, and reduce risk. Progress offers a comprehensive portfolio of best-in-class infrastructure software spanning event-driven visibility and real-time response, open integration, data access and integration, and application development and management—all supporting on-premises and SaaS/cloud deployments. Progress maximizes the benefits of operational responsiveness while minimizing IT complexity and total cost of ownership.

WORLDWIDE HEADQUARTERS

Progress Software Corporation, 14 Oak Park, Bedford, MA 01730 USA
Tel: +1 781 280-4000 Fax: +1 781 280-4095 On the Web at: www.progress.com

Find us on  [facebook.com/progresssw](https://www.facebook.com/progresssw)  twitter.com/progresssw  [youtube.com/progresssw](https://www.youtube.com/progresssw)

For regional international office locations and contact information, please refer to the Web page below:
www.progress.com/worldwide

Progress, Responsive Process Management, Savvion, Savvion BusinessManager and Business Making Progress are trademarks or registered trademarks of Progress Software Corporation or one of its affiliates or subsidiaries in the U.S. and other countries. Any other marks contained herein may be trademarks of their respective owners. Specifications subject to change without notice.

© 2009, 2010-2012 Progress Software Corporation and/or its subsidiaries or affiliates. All rights reserved.

Rev. 02/12 | 120127-0067

