

# PROGRESS<sup>®</sup> SAVVION<sup>®</sup> BPM STUDIO

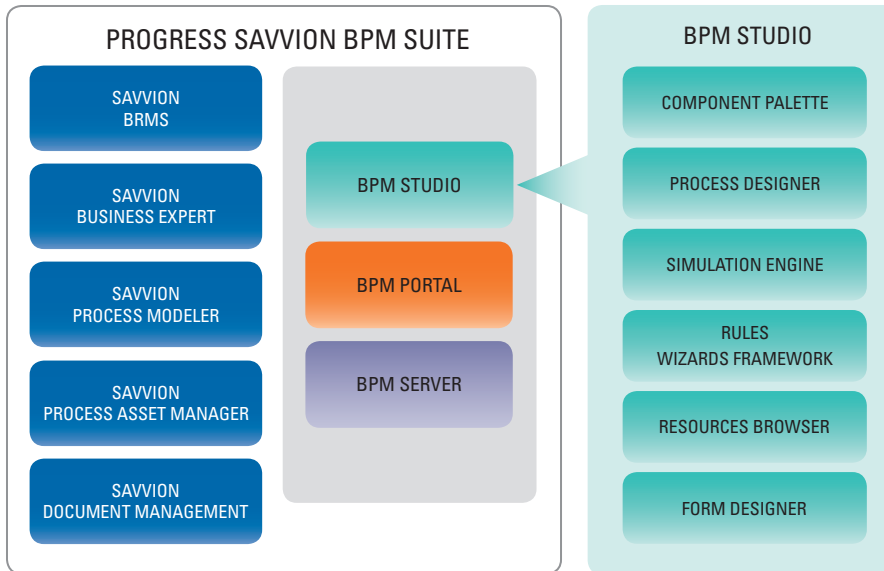
## PROGRESS<sup>®</sup> SAVVION<sup>®</sup> BPM STUDIO OVERVIEW

Fundamental to the Progress<sup>®</sup> Savvion<sup>®</sup> Business Process Management (BPM) suite, Progress<sup>®</sup> Savvion<sup>®</sup> BPM Studio provides a rich development environment for application developers and technology-savvy business users. With Progress Savvion BPM Studio, users can see and influence how business processes exchange information, which systems will be touched, how databases from different applications will interact, and what data will be presented. Progress Savvion BPM Studio is IT's process sandbox within the Progress Savvion Business Process Management suite.

The Eclipse-based Progress Savvion BPM Studio allows users to develop processes that can interact with a wide variety of external applications, across platforms, across organizations and via web services. Built on a solid foundation of Java and XML, Progress Savvion BPM Studio is comprised of six key components:

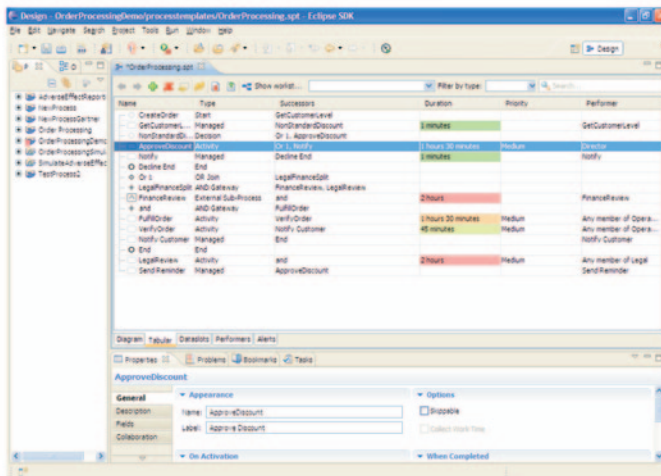
## HIGHLIGHTS

*Progress<sup>®</sup> Savvion<sup>®</sup> BPM Studio is a rich application development environment for creating effective business process solutions.*

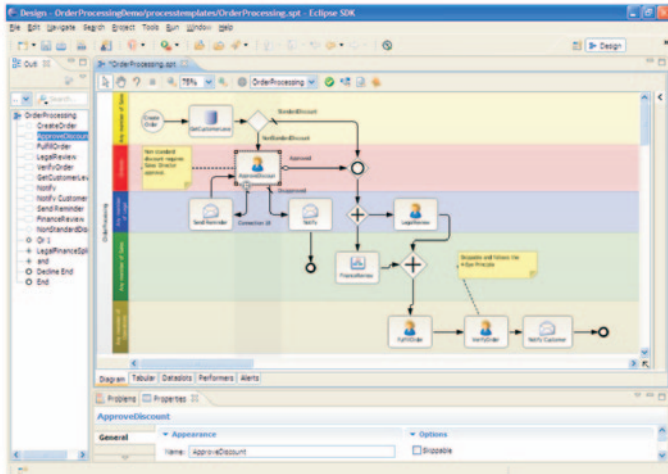


## THE PROCESS DESIGNER

The Process Designer provides an elegant, centralized user interface for assembling process-driven applications. The Progress® Savvion® Process Modeler patent-pending Tabular View process definition provides a unique and easy-to-use way for business users to define their process. Process diagrams are automatically generated from the Tabular View.



Progress Savvion Process Modeler also provides a graphical desktop design environment that is intuitive and simple to learn. You can not only create a visual representation of your process, but also generate process-flow diagrams that contain instructions for handling exceptions, sub-processes, and events. The Process Designer is completely compatible with objects stored in the reusable components library, which makes it fast and easy to leverage enterprise best practices.



A built-in Expression Builder provides people with an easy way to describe their decision flow logic. This logic can be extended with scripting by technical experts if more complex logic is required.

 A screenshot of the Progress Savvion Expression Builder dialog box. The dialog is titled "Link" and has a "Name" field set to "Approve Discount". It has three tabs: "General", "Description", and "Simulation". The "General" tab is active, showing fields for "Appearance" (Label: Approve Discount), "Attributes" (Default checkbox), and "Condition". The "Condition" section contains a table of logical expressions:
 

Field	Operator	Field	Operator	Field	Operator	Field
WORKSTEPNAME	equals	PRIORITY	And			
STARTTIME	equals	STARTTIME	And			
PROCESSNAME	equals	WORKSTEPNAME	And			
PRIORITY	equals	"High"	And			

 At the bottom of the dialog are "OK", "Cancel", and "Advanced >>" buttons.

The Progress Savvion BPM Studio includes a debugging capability that makes it easy for solution developers to ensure high solution quality

---

before deployment. It enables detailed adapter testing, rules validation, and script debugging to ensure that process revisions that automate key functions are as error-free as possible.

## RULES WIZARDS FRAMEWORK

Central to the efficacy of Progress Savvion BPM Studio, the Rules Wizards Framework allows users to implement simple or complex rules that can be used in a current process, a specific work step, or combined to create new rule sets. Grouped by categories, the Wizards Framework provides rules covering most common functional requirements of work steps and business applications. Rules categories exist for:

- > Notification
- > Metrics
- > Task management and routing
- > Integration
- > Alerts

## COMPONENT PALETTE

Based upon business process modeling and notation (BPMN), the accepted standard for drawing business processes, the Component Palette provides a single pane for easy diagramming of business process flows. Whether applying business shapes, performers (the “who” or “what” of a business process), layout, notes or rules to a process, you can access these components from this task pane.

## RESOURCE BROWSER

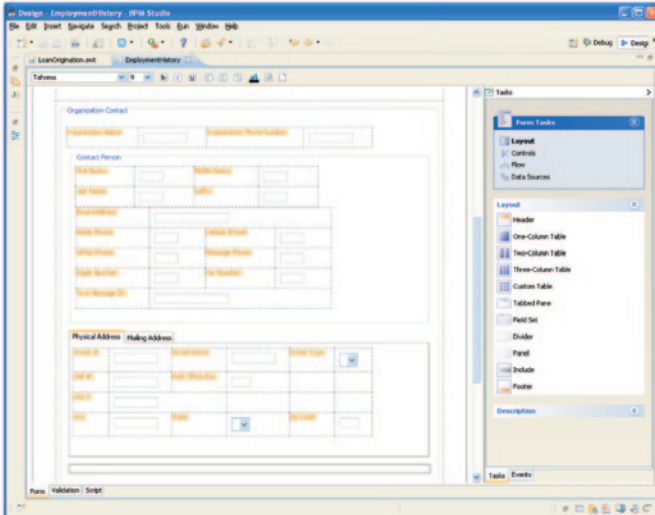
The Progress Savvion BPM Studio Resource Browser provides a big-picture view of processes and what is in your particular project. You can see a hierarchical view of all files that make up an active project or display the structure of a selected process showing performers and rules assigned to the overall process or any of its component work steps. In addition, you can

use the UDDI browser feature to find web services or the managed adapter browser feature to find any adapters that you have created before.

The Resource Browser also gives you access to the Progress Savvion Reusable Components Library. This server-side repository makes all of the organization's best practices available at a macro and granular level. Users can easily check in and check out models, business rules, data fields (dataslots), adapters, forms and web applications. The library contains all relevant information about those components and provides version control features including check in/check out, release management, source control and audit trails for keeping track of changes and improving reuse.

## FORMS DESIGNER

Directly integrated with Progress Savvion BPM Studio, the Forms Designer enables users to further customize the default presentation page that users see on-screen for each process work step. Headers, multicolumn tables, control formatting (text fields, drop-down lists, images, etc.) and datasource binding can all be configured using the Component Palette.



The WYSIWYG, AJAX-based Forms Designer and the result can be previewed in a web browser before deployment. An extensive set of controls and ability to include widgets like Yahoo and Google allow you to create rich Internet application forms.

---

## SIMULATION ENGINE

The powerful integrated Simulation Engine of Progress Savvion BPM Studio allows users to simulate a process business flow before actual deployment.

The Simulation Engine provides:

- > **Faster testing for design flaws**—A process instance can be run a few times or a few thousand times directly within Progress Savvion BPM Studio, negating the typical testing requirement for two servers (one for production, one for testing) and translating into a dramatically reduced deployment timeline.
- > **Accurate estimation of resources cost**—By defining quantitative resources (e.g., equipment, electricity, labor) and measurement units (\$USD, kW hours, man-hours, etc.) Progress Savvion BPM Studio can create an accurate estimate of how much the process will cost or how many resources the process will require.
- > **Proactive identification of bottlenecks**—The Simulation Engine keeps track of the number and status of instances in the waiting queues as a simulation is run and indicates when a bottleneck occurs, i.e., when a work step had to wait for a performing resource to be released. Armed with this information, developers can optimize the process flow before deployment to ensure a smooth implementation.
- > **Better testing randomization**—To support the full range of testing possibilities, the Simulation Engine supports two types of testing randomization: randomizing the time of intervals between process instances and randomizing the duration of work time for a specific work step in the process. Depending on the simulation requirement, the following probability distributions can be assigned: constant distribution, exponential distribution or normal distribution with a standard deviation.

## WEB SERVICES AND W-S SECURITY

Progress Savvion BPM is ideal for organizations pursuing a service-oriented architecture (SOA). All process solutions created in Progress Savvion BPM are exposed as web services. Progress Savvion BPM external web services are quick and secure. The Progress Savvion BPM Studio fully supports SOAP message testing, complex datatype transformation and mapping, and multi-server deployment configuration. The platform supports W-S Security natively, including full support of username tokens, timestamps, SAML tokens, digital signatures, and message encryption.

## PROGRESS SAVVION BPM STUDIO TECHNICAL MATRIX

Progress Savvion BPM Studio uses the Eclipse integrated development environment (SDK version 3.1.2), a comprehensive cross-platform environment providing a stable, universal platform for application development.

## WHY PROGRESS SAVVION?

As the BPM trailblazer, Progress Savvion moves enterprises beyond ordinary BPM with proven business-critical software, solutions, and services that make organizations more competitive and cost-efficient.

Progress Savvion is an all-in-one, streamlined BPM solution for continuous business process improvement enabling business users and IT to collaboratively deploy process improvement initiatives in as few as 30 days while delivering a return on investment as high as 300 percent. We provide business users and business analysts with easy-to-use, yet very powerful continuous improvement tools. Line-of-business managers can now responsively manage their operations, receiving continuous feedback on performance and recommended corrective actions to optimize their operations.

### PROGRESS SAVVION BPM STUDIO TECHNICAL MATRIX

#### Progress Savvion BPM Version

SBM 7.5 SP1

#### Operating Systems

Windows 2000/Vista/ XP Professional SP2

#### Disk Space Requirements

The Savvion BPM Studio client requires at least 300 MB of local disk space  
512 MB RAM

#### Supported Database Connectivity (via JDBC Driver)

Oracle 10g/11g Enterprise Edition  
Oracle 10g Express Edition  
Microsoft SQL Server 2005  
IBM DB2 9.2/9.5  
Sybase 12.5

#### Java Standard:

JDK 1.5/1.6  
J2EE 1.3/1.4 (\*1)

Progress Savvion BPM also provides a unique capability for establishing a foundation for process optimization with an integrated path to operational responsiveness through the Progress® Responsive Process Management™ (RPM) suite. Leveraging leading Progress business event processing (BEP) and business rules management (BRM) capabilities, enterprises can further automate their processes through smarter decision management. Together, Progress RPM™ takes visibility and control beyond BPM to deliver an intelligent business operation (IBO) solution that allows organizations to sense and respond to changing conditions as they occur. The enhanced capabilities of Progress RPM mean that businesses can now analyze **what is about to happen** to proactively capitalize on opportunities, driving enhanced profitability and reducing risk.

---

## PROGRESS SOFTWARE

Progress Software Corporation (NASDAQ: PRGS) is a global software company that enables enterprises to be operationally responsive to changing conditions and customer interactions as they occur. Our goal is to enable our customers to capitalize on new opportunities, drive greater efficiencies, and reduce risk. Progress offers a comprehensive portfolio of best-in-class infrastructure software spanning event-driven visibility and real-time response, open integration, data access and integration, and application development and management—all supporting on-premises and SaaS/cloud deployments. Progress maximizes the benefits of operational responsiveness while minimizing IT complexity and total cost of ownership.

## WORLDWIDE HEADQUARTERS

Progress Software Corporation, 14 Oak Park, Bedford, MA 01730 USA  
Tel: +1 781 280-4000 Fax: +1 781 280-4095 On the Web at: [www.progress.com](http://www.progress.com)

Find us on  [facebook.com/progresssw](https://facebook.com/progresssw)  [twitter.com/progresssw](https://twitter.com/progresssw)  [youtube.com/progresssw](https://youtube.com/progresssw)

For regional international office locations and contact information, please refer to the Web page below:  
[www.progress.com/worldwide](http://www.progress.com/worldwide)

Progress, Responsive Process Management, Savvion, Savvion BusinessManager and Business Making Progress are trademarks or registered trademarks of Progress Software Corporation or one of its affiliates or subsidiaries in the U.S. and other countries. Any other marks contained herein may be trademarks of their respective owners. Specifications subject to change without notice.

© 2009, 2010-2012 Progress Software Corporation and/or its subsidiaries or affiliates. All rights reserved.

Rev. 02/12 | 120120-0114

