

WHAT'S NEW IN PROGRESS® OPENEDGE® 10.2B

INTRODUCTION

At Progress Software, we simplify the job of creating and operating the world's best business applications. Our Progress® OpenEdge® platform offers a complete, out-of-the-box solution for developing, integrating, and managing business applications offered as a service or on-premises.

OpenEdge is designed to assist software developers to become more operationally responsive to market and customer needs now and in the future. With OpenEdge, service and application development is agile and cost-effective, and the resultant applications are reliable, easy-to-maintain, cost-effective, and service-enabled. As a result, companies are able to capitalize on new opportunities by getting competitive applications to market faster.

In Release 10.2B, we build on previous OpenEdge 10 releases to further increase developer productivity, while still reducing the total cost of ownership of the business application. New capabilities fortify application security and compliance—a “must have” for SaaS, extend the reach of application deployment via the Web, and improve overall performance with increased visibility into operations.

KEY FEATURES

Progress® OpenEdge® 10.2B enables the development of applications and services with greater operational responsiveness to customer and market demands. New features and enhancements:

- > *Deliver applications that comply with the latest data privacy regulations*
- > *Simplify the deployment of applications via the Web*
- > *Increase visibility into operations*
- > *Accelerate delivery of service-based applications*

SECURITY AND COMPLIANCE

In this era of increased regulatory requirements, data must be secure and private in order to protect intellectual property, maximize business success, and prevent liability. Additionally, in a SaaS environment, security and compliance are necessary for customer trust and, therefore, market success.

To enable users to build secure, compliant applications, Release 10.2B introduces an additional product to the Progress® OpenEdge® Enterprise RDBMS—Transparent Data Encryption (TDE). This product, along with other new features in 10.2B, provides the most cost-effective and compliant data privacy solution available on the market today.

ENCRYPTION

Transparent Data Encryption (TDE) protects sensitive data throughout the data lifecycle. It encrypts data on disk whether the data is in the database, a backup, or a binary dump and maintains the data encryption throughout its lifecycle. TDE uses industry-standard encryption libraries and adheres to the PCI (payment card industry) data security standard. PCI compliance applies to companies that process, store, or transmit credit card information—essentially any merchant that has a Merchant ID.

This new-level of data protection is available with minimal impact on development time and costs:

- > With TDE, no application changes are required, and all applications continue to work as before. TDE is managed by policies independent of the ABL code.
- > TDE avoids the overhead and potential issues created if a “custom-built” solution were to be used instead. Custom encryption solutions divert scarce programming talent to infrastructure (encryption) work instead of addressing business needs. In addition, best practices for audits will look at “separation of duties,” i.e., keep the development programmers away from actions that could compromise sensitive production data.

- > TDE works with minimal performance impact, approximately 5% for the typical OLTP application. This is the time it takes to un-encrypt the data being read into memory and to encrypt data being written from memory to disk.

AUDITING

Auditing was released in an earlier version of OpenEdge 10. Release 10.2B improves the auditing function, and it is now fully supported by encryption. In addition, TDE reduces the time and cost required by internal auditors to evaluate compliance.

DEVELOPER PRODUCTIVITY IMPROVEMENTS

Enhanced Progress® OpenEdge® Architect and OpenEdge GUI for .NET features improve developer productivity in Release 10.2B. These include:

- > Improved OpenEdge Architect integration
- > Upgraded Ultra Controls for .NET
- > Migration tools for upgrading user interface controls
- > ProDataSets to/from JSON (JavaScript Object Notation)
- > Taking full advantage of .NET capabilities from the ABL

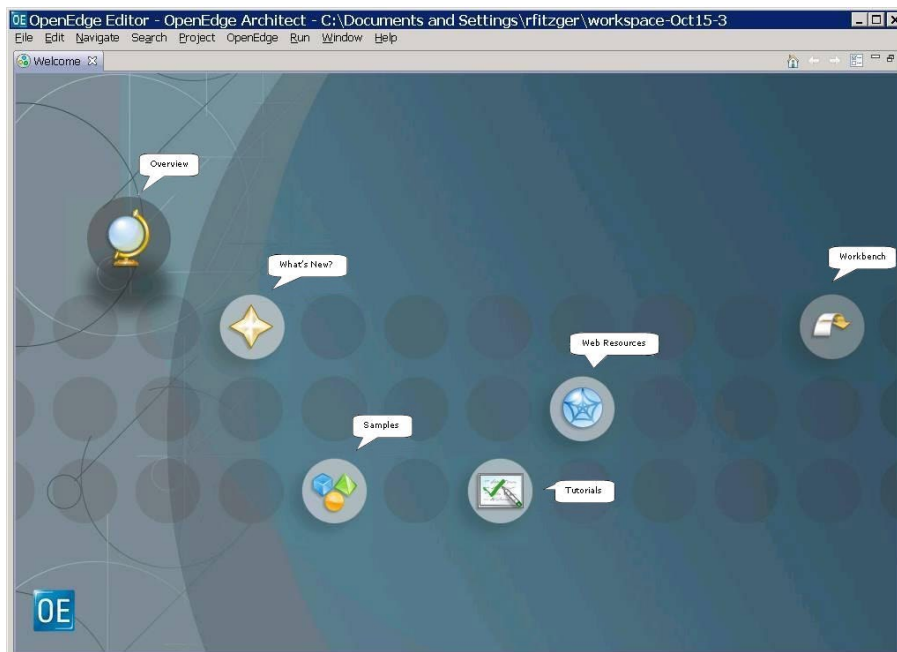


Figure 1:
The New OpenEdge welcome page in Release 10.2B with Icons

IMPROVED PROGRESS OPENEDGE ARCHITECT INTEGRATION

The new OpenEdge Architect welcome page provides links to various sources of information. These links make working with OpenEdge faster and easier, by providing:

- > Up-to-date access to “getting started” material, including short videos and white papers
- > Better integration with the welcome pages of other Eclipse-based Progress products and third-party plug-ins. Leveraging the Eclipse universal intro page architecture provides a better user experience when more than one Progress product is installed in a single Eclipse environment. For example, users of both OpenEdge Architect and Progress® Sonic® Workbench will see content in one place. Similarly, the welcome pages from universal third-party plug-ins will be better integrated.

MIGRATION TOOLS FOR UPGRADING USER INTERFACE CONTROLS

Release 10.2B includes a migration mechanism for UI controls. This makes updates faster and easier and eliminates the confusion of having two or more versions of assemblies in the development environment. As a result, it allows OpenEdge users to keep current with the latest Infragistics controls in addition to any other controls that may be used.

PRODATASETS TO/FROM JSON (JAVASCRIPT OBJECT NOTATION)

With this release ABL developers can read/write ProDataSets and temptables from/to JSON using simple ABL syntax. This facilitates the creation of Ajax-based Rich Internet Applications (RIA), allowing customers to leverage their ABL back-ends and extend the reach of their applications via the Web. This enhances current Progress® WebSpeed® capabilities for applications that are being deployed via a SaaS business model.

TAKING FULL ADVANTAGE OF .NET CAPABILITIES FROM THE ABL

ABL developers can now take full advantage of .NET graphical components using the GUI for .NET functionality. Using strongly-typed events, .NET generics, and abstract classes, companies can provide greater customization and flexibility in their UIs, resulting in a richer user experience.

OPERATIONAL EXCELLENCE AND INCREASED BUSINESS VISIBILITY

A number of new features have been added to improve the overall operation of your OpenEdge environment, including:

- > Simplified installation procedures
- > Progress® Actional® for improved business visibility
- > Alternate buffer pool

SIMPLIFIED INSTALLATION PROCEDURES

OpenEdge Management and OpenEdge Explorer are now packaged with the rest of the OpenEdge environment and no longer require a separate installation.

ACTIONAL FOR IMPROVED BUSINESS VISIBILITY

With OpenEdge10.2B, Actional can now monitor a variety of OpenEdge resources including: the Application Server, Progress WebSpeed, the AppServer Internet Adapter, ABL and external Web services, the OpenEdge Adapter for Progress® SonicMQ® and Progress® Sonic® ESB, and batch clients.

Actional allows for application transaction flow to be automatically discovered and performance to be monitored without requiring any coding changes. This enables monitoring of service-level agreements (SLAs) and real-time alerting on performance and availability issues. Actional also provides the ability to monitor across a wide variety of infrastructure and technologies in addition to the OpenEdge environment. When performance or availability issues develop, IT can quickly pinpoint the root cause of the problem and quickly resolve the issue.

Separately, Actional now supports the use of the OpenEdge database as its data repository, simplifying the database choice and management for organizations using OpenEdge technology.

ALTERNATE BUFFER POOL

Support for an alternate buffer pool is now available with the OpenEdge Enterprise RDBMS. The database administrator can select tables to be assigned to the alternate buffer pool, which places them outside of contention in the standard in-memory database buffer pool. In general, data stored in the alternate buffer pool is less likely to be swapped out of memory, improving runtime performance.

SUMMARY

At Progress Software, as we strive to simplify the job of creating and operating the world's best business applications, we will continue to enhance our products. Our goal is to ensure that OpenEdge customers and partners are able to continue to develop business applications and services that meet the demands of their target markets and users. Our commitment includes the continuous enhancement of OpenEdge to incorporate state-of-the-art technology, as well as features that make developers more productive, while allowing you to operate efficiently and at a lower total cost of ownership.

PROGRESS SOFTWARE

Progress Software Corporation (NASDAQ: PRGS) is a global software company that enables enterprises to be operationally responsive to changing conditions and customer interactions as they occur. Our goal is to enable our customers to capitalize on new opportunities, drive greater efficiencies, and reduce risk. Progress offers a comprehensive portfolio of best-in-class infrastructure software spanning event-driven visibility and real-time response, open integration, data access and integration, and application development and management—all supporting on-premises and SaaS/cloud deployments. Progress maximizes the benefits of operational responsiveness while minimizing IT complexity and total cost of ownership.

WORLDWIDE HEADQUARTERS

Progress Software Corporation, 14 Oak Park, Bedford, MA 01730 USA
Tel: +1 781 280-4000 Fax: +1 781 280-4095 On the Web at: www.progress.com

Find us on [f facebook.com/progresssw](https://www.facebook.com/progresssw) [t twitter.com/progresssw](https://twitter.com/progresssw) [y youtube.com/progresssw](https://www.youtube.com/progresssw)

For regional international office locations and contact information, please refer to the Web page below:
www.progress.com/worldwide

Progress, Actional, OpenEdge, Sonic, SonicMQ, WebSpeed and Business Making Progress are trademarks or registered trademarks of Progress Software Corporation or one of its affiliates or subsidiaries in the U.S. and other countries. Any other marks contained herein may be trademarks of their respective owners. Specifications subject to change without notice.

©2008, 2011 Progress Software Corporation and/or its subsidiaries or affiliates. All rights reserved.

Rev. 11/11 | 6525-129382

